

YOUR AUTOMATION PARTNER



SCAN TO
DOWNLOAD
CATALOG:



ALUMINIUM EXTRUSION & ACCESSORIES

PRODUCT CATALOGUE

www.wilsonengg.in

Our range of Aluminium Profile is available in a large range of sizes starting with 20 x 20 through to 100 x 200 making it suitable to use in all types of applications,

The T slot design allows for easy mounting of panels in the slot with simple, strong and cost-effective connecting solutions make assembly quick and easy,

At WILSON ENGINEERING WORKS we keep a large amount of Profile and Components at our facility in Padi - Chennai, allowing us to ensure a fast turnaround for our customers,

We offer our customers the flexibility of having the profile and components supplied in a number of options,

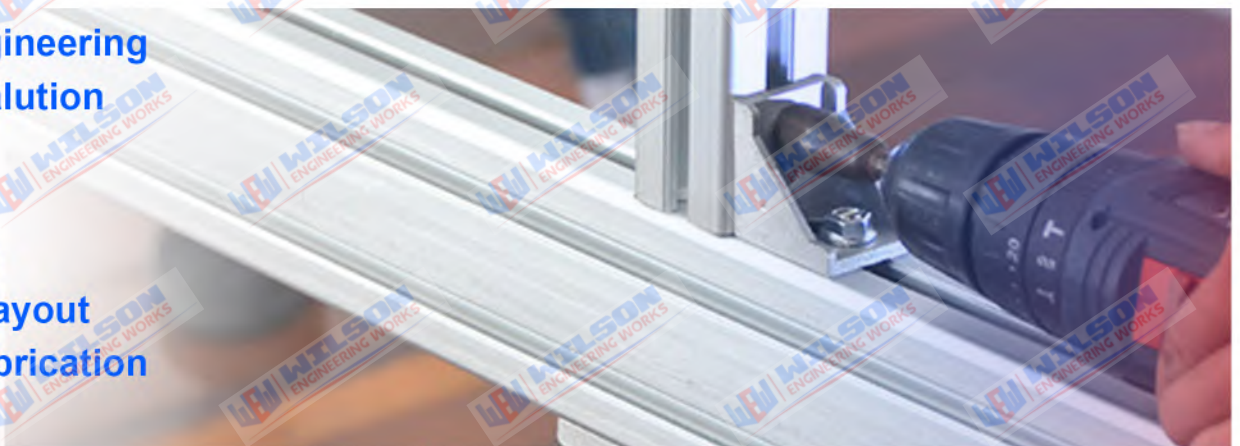
FLAT PACKED KIT:

- Profiles cut to length in required mm—No surplus material purchased saving time and money.
- Components supplied in kit form for self-assembly.
- Profiles can also be supplied drilled or tapped for connectors if required.

FULLY ASSEMBLED:

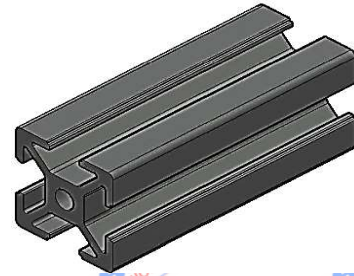
- Our Design Team offers the flexibility to customers, whether it be full product design or modifications, we can provide you with a drawing and/or CAD model for approval.
- In-house assembly; with frameworks supplied and despatched Fully Assembled.

- Design/Engineering
- On-site Evaluation
- Repair
- Training
- Installation
- Facilities Layout
- Custom Fabrication
- Integration



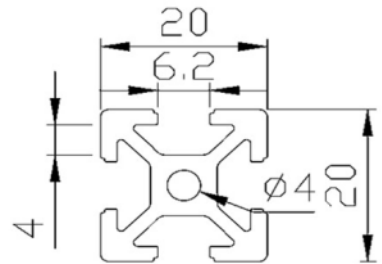
PART NO WE AP 2020 S6

SLOT 6
20 x 20



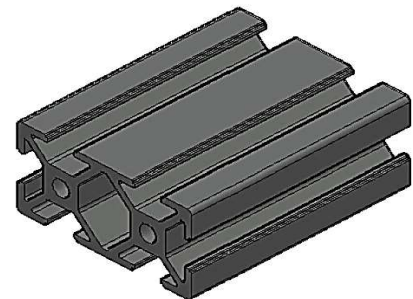
Technical Data

| | |
|----------------------------|--|
| Material - Alloy & Temper | 6063 T6 |
| Surface Processing | Anodised |
| Area Sq.mm | 163.1 |
| Perimeter in mm | 161.6 |
| Unspecified Tolerance | IS:6477-1990 |
| Specification / Cut length | 6000mm(6 MTR) |
| Colour | Natural Silver |
| Application | Machine Structure Frame, Work Table, Machine Cover, Conveyor Base Frame ,Door Frame, etc., |



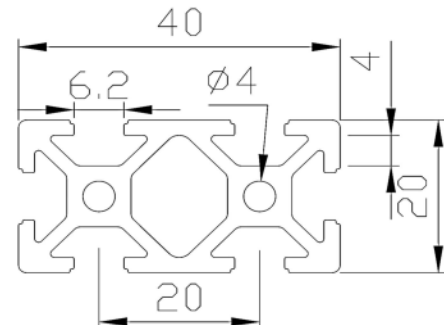
PART NO WE AP 2040 S6

SLOT 6
20 x 40



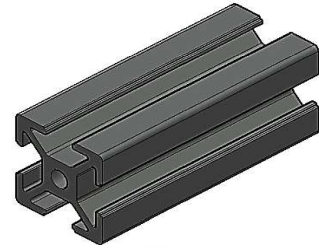
Technical Data

| | |
|----------------------------|--|
| Material - Alloy & Temper | 6063 T6 |
| Surface Processing | Anodised |
| Area Sq.mm | 296.8 |
| Perimeter in mm | 243.3 |
| Unspecified Tolerance | IS:6477-1990 |
| Specification / Cut length | 6000mm(6 MTR) |
| Colour | Natural Silver |
| Application | Machine Structure Frame, Work Table, Machine Cover, Conveyor Base Frame ,Door Frame, etc., |



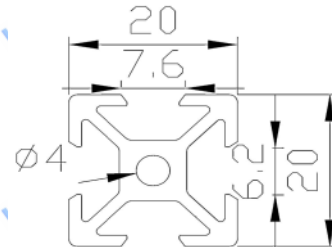
PART NO WE AP 2020V S6

SLOT 6
20 x 20 V



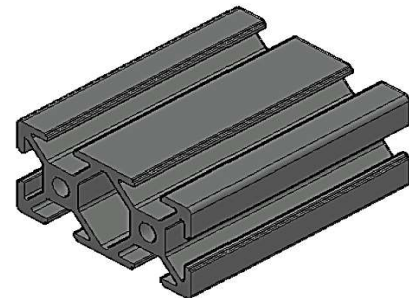
Technical Data

| | |
|----------------------------|--|
| Material - Alloy & Temper | 6063 T6 |
| Surface Processing | Anodised |
| Area Sq.mm | 163.1 |
| Perimeter in mm | 161.6 |
| Unspecified Tolerance | IS:6477-1990 |
| Specification / Cut length | 6000mm(6 MTR) |
| Colour | Natural Silver |
| Application | Machine Structure Frame, Work Table, Machine Cover, Conveyor Base Frame ,Door Frame, etc., |



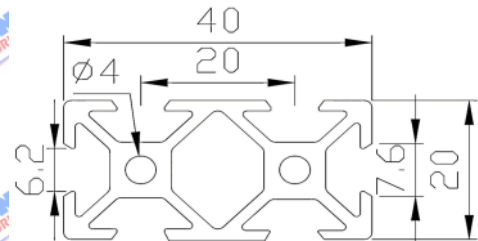
PART NO WE AP 2040V S6

SLOT 6
20 x 40 V



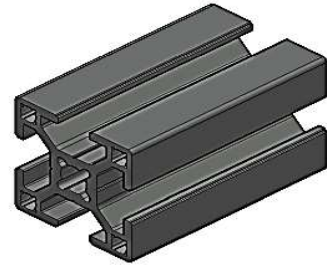
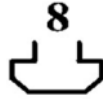
Technical Data

| | |
|----------------------------|--|
| Material - Alloy & Temper | 6063 T6 |
| Surface Processing | Anodised |
| Area Sq.mm | 296.8 |
| Perimeter in mm | 243.3 |
| Unspecified Tolerance | IS:6477-1990 |
| Specification / Cut length | 6000mm(6 MTR) |
| Colour | Natural Silver |
| Application | Machine Structure Frame, Work Table, Machine Cover, Conveyor Base Frame ,Door Frame, etc., |



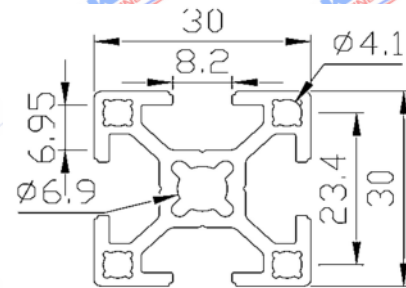
PART NO WE AP 3030 S8

SLOT 8
30 x 30



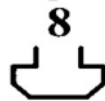
Technical Data

| | |
|----------------------------|--|
| Material - Alloy & Temper | 6063 T6 |
| Surface Processing | Anodised |
| Area Sq.mm | 307.6 |
| Perimeter in mm | 237.1 |
| Unspecified Tolerance | IS:6477-1990 |
| Specification / Cut length | 6000mm(6 MTR) |
| Colour | Natural Silver |
| Application | Machine Structure Frame, Work Table, Machine Cover, Conveyor Base Frame ,Door Frame, etc., |



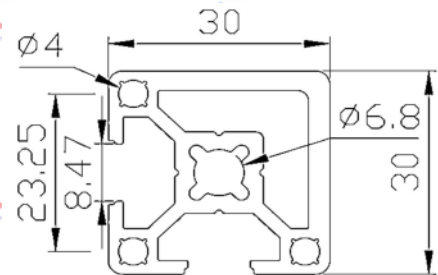
PART NO WE AP 30302C S8

SLOT 8
30 x 30



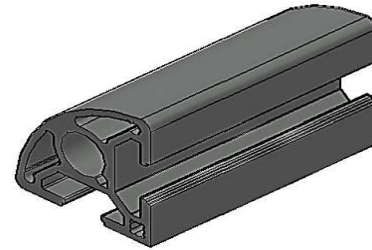
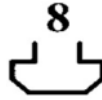
Technical Data

| | |
|----------------------------|--|
| Material - Alloy & Temper | 6063 T6 |
| Surface Processing | Anodised |
| Area Sq.mm | 367.2 |
| Perimeter in mm | 174.8 |
| Unspecified Tolerance | IS:6477-1990 |
| Specification / Cut length | 6000mm(6 MTR) |
| Colour | Natural Silver |
| Application | Machine Structure Frame, Work Table, Machine Cover, Conveyor Base Frame ,Door Frame, etc., |



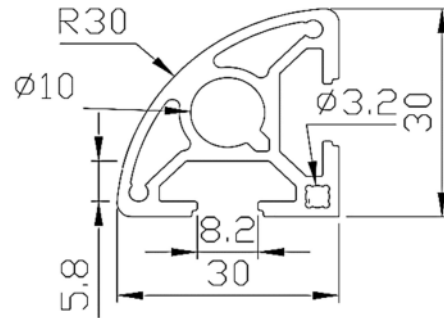
PART NO WE AP 3030R S8

SLOT 8
30 x 30



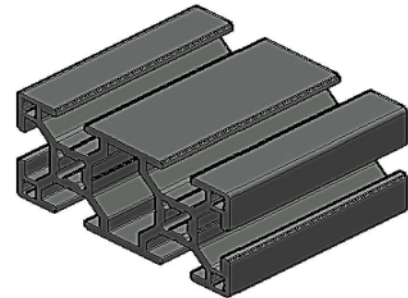
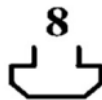
Technical Data

| | |
|----------------------------|--|
| Material - Alloy & Temper | 6063 T6 |
| Surface Processing | Anodised |
| Area Sq.mm | 362.20 |
| Perimeter in mm | 174.80 |
| Unspecified Tolerance | IS:6477-1990 |
| Specification / Cut length | 6000mm(6 MTR) |
| Colour | Natural Silver |
| Application | Machine Structure Frame, Work Table, Machine Cover, Conveyor Base Frame, Door Frame, etc., |



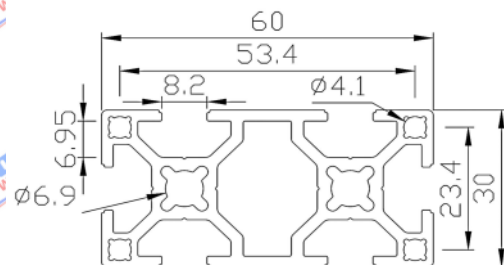
PART NO WE AP 3060 S8

SLOT 8
30 x 60



Technical Data

| | |
|----------------------------|--|
| Material - Alloy & Temper | 6063 T6 |
| Surface Processing | Anodised |
| Area Sq.mm | 563.90 |
| Perimeter in mm | 356.50 |
| Unspecified Tolerance | IS:6477-1990 |
| Specification / Cut length | 6000mm(6 MTR) |
| Colour | Natural Silver |
| Application | Machine Structure Frame, Work Table, Machine Cover, Conveyor Base Frame, Door Frame, etc., |

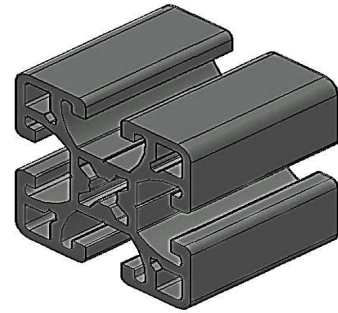


PART NO WE AP 4040 S8

SLOT 8

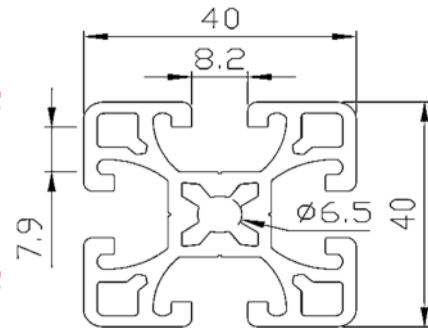
40 x 40 S8

8



Technical Data

| | |
|----------------------------|--|
| Material - Alloy & Temper | 6063 T6 |
| Surface Processing | Anodised |
| Area Sq.mm | 622.00 |
| Perimeter in mm | 509.50 |
| Unspecified Tolerance | IS:6477-1990 |
| Specification / Cut length | 6000mm(6 MTR) |
| Colour | Natural Silver |
| Application | Machine Structure Frame, Work Table, Machine Cover, Conveyor Base Frame ,Door Frame, etc., |

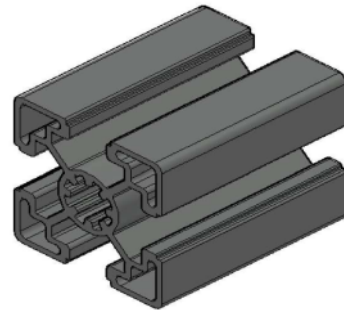


PART NO WE AP 4040 S10

SLOT 10

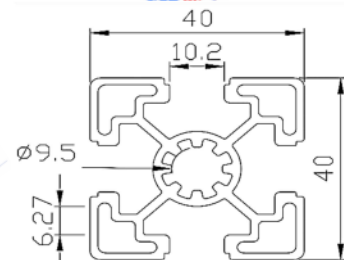
40 x 40 S10

10



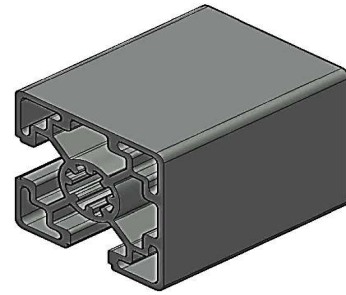
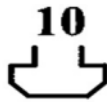
Technical Data

| | |
|----------------------------|--|
| Material - Alloy & Temper | 6063 T6 |
| Surface Processing | Anodised |
| Area Sq.mm | 478 |
| Perimeter in mm | 314 |
| Unspecified Tolerance | IS:6477-1990 |
| Specification / Cut length | 6000mm(6 MTR) |
| Colour | Natural Silver |
| Application | Machine Structure Frame, Work Table, Machine Cover, Conveyor Base Frame ,Door Frame, etc., |



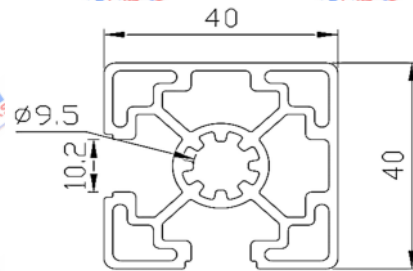
PART NO WE AP 40402C S10

SLOT 10
40 x 40 2C 10



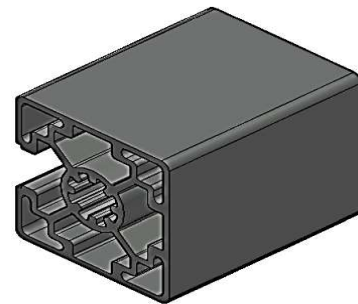
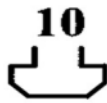
Technical Data

| | |
|----------------------------|--|
| Material - Alloy & Temper | 6063 T6 |
| Surface Processing | Anodised |
| Area Sq.mm | 515.6 |
| Perimeter in mm | 235.3 |
| Unspecified Tolerance | IS:6477-1990 |
| Specification / Cut length | 6000mm(6 MTR) |
| Colour | Natural Silver |
| Application | Machine Structure Frame, Work Table, Machine Cover, Conveyor Base Frame, Door Frame, etc., |



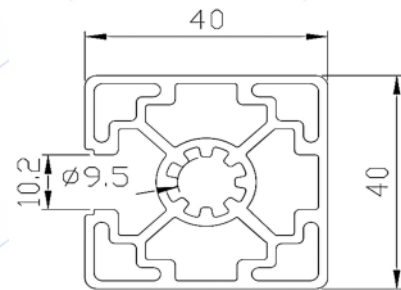
PART NO WE AP 40403C S10

SLOT 10
40 x 40 3C 10



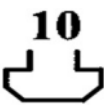
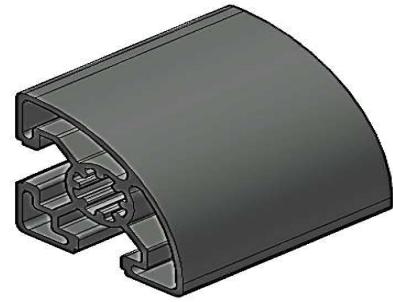
Technical Data

| | |
|----------------------------|--|
| Material - Alloy & Temper | 6063 T6 |
| Surface Processing | Anodised |
| Area Sq.mm | 579.4 |
| Perimeter in mm | 195.9 |
| Unspecified Tolerance | IS:6477-1990 |
| Specification / Cut length | 6000mm(6 MTR) |
| Colour | Natural Silver |
| Application | Machine Structure Frame, Work Table, Machine Cover, Conveyor Base Frame, Door Frame, etc., |



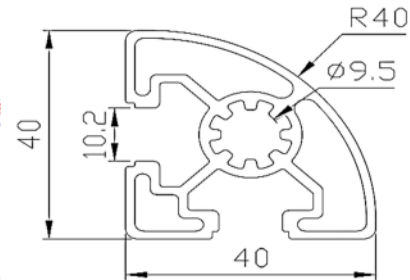
PART NO WE AP 4040R S10

SLOT 10
40 x 40 R 10

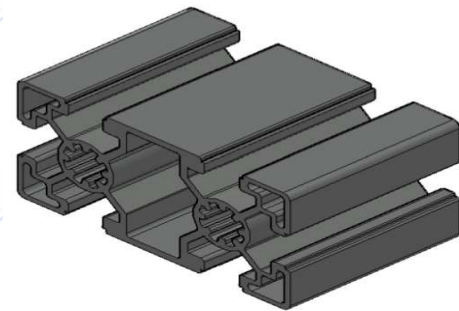
Technical Data

| | |
|----------------------------|--|
| Material - Alloy & Temper | 6063 T6 |
| Surface Processing | Anodised |
| Area Sq.mm | 405.3 |
| Perimeter in mm | 220.6 |
| Unspecified Tolerance | IS:6477-1990 |
| Specification / Cut length | 6000mm(6 MTR) |
| Colour | Natural Silver |
| Application | Machine Structure Frame, Work Table, Machine Cover, Conveyor Base Frame ,Door Frame, etc., |



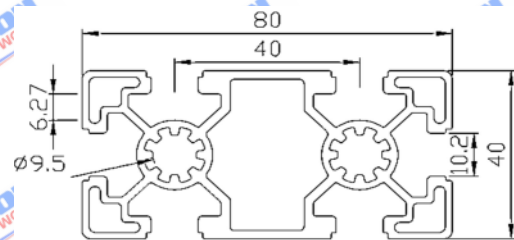
PART NO WE AP 4080 S10

SLOT 10
40 x 80

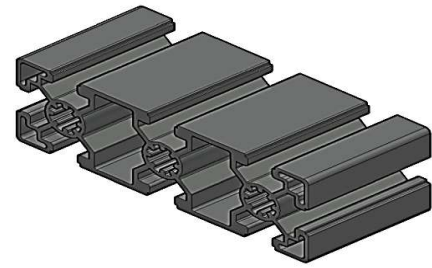
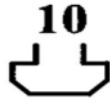
Technical Data

| | |
|----------------------------|--|
| Material - Alloy & Temper | 6063 T6 |
| Surface Processing | Anodised |
| Area Sq.mm | 878.2 |
| Perimeter in mm | 472.7 |
| Unspecified Tolerance | IS:6477-1990 |
| Specification / Cut length | 6000mm(6 MTR) |
| Colour | Natural Silver |
| Application | Machine Structure Frame, Work Table, Machine Cover, Conveyor Base Frame ,Door Frame, etc., |



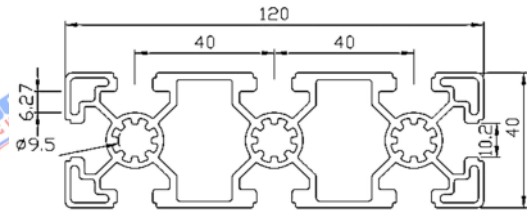
PART NO WE AP 40120 S10

SLOT 10
40 x 120



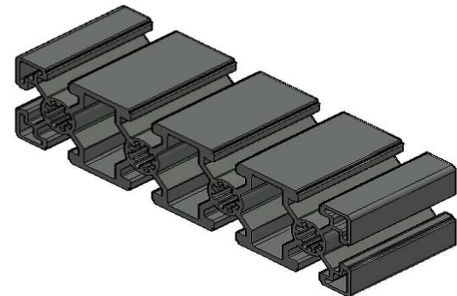
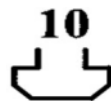
Technical Data

| | |
|----------------------------|--|
| Material - Alloy & Temper | 6063 T6 |
| Surface Processing | Anodised |
| Area Sq.mm | 1278.5 |
| Perimeter in mm | 631.4 |
| Unspecified Tolerance | IS:6477-1990 |
| Specification / Cut length | 6000mm(6 MTR) |
| Colour | Natural Silver |
| Application | Machine Structure Frame, Work Table, Machine Cover, Conveyor Base Frame ,Door Frame, etc., |



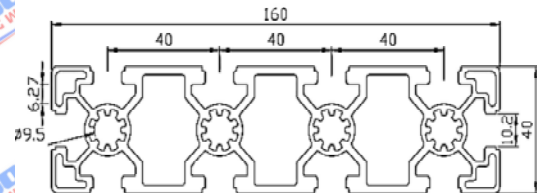
PART NO WE AP 40160 S10

SLOT 10
40 x 160



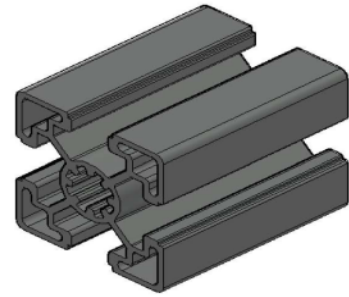
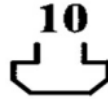
Technical Data

| | |
|----------------------------|--|
| Material - Alloy & Temper | 6063 T6 |
| Surface Processing | Anodised |
| Area Sq.mm | 1816.5 |
| Perimeter in mm | 790.5 |
| Unspecified Tolerance | IS:6477-1990 |
| Specification / Cut length | 6000mm(6 MTR) |
| Colour | Natural Silver |
| Application | Machine Structure Frame, Work Table, Machine Cover, Conveyor Base Frame ,Door Frame, etc., |



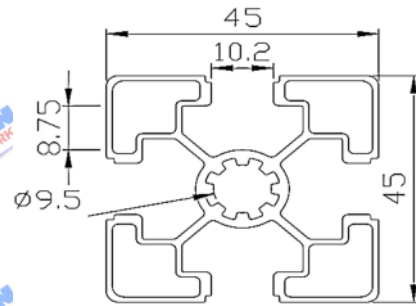
PART NO WE AP 4545 S10

SLOT 10
45 x 45



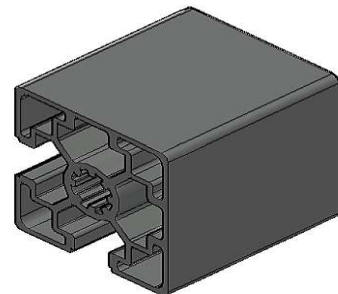
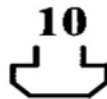
Technical Data

| | |
|----------------------------|--|
| Material - Alloy & Temper | 6063 T6 |
| Surface Processing | Anodised |
| Area Sq.mm | 564.4 |
| Perimeter in mm | 352.9 |
| Unspecified Tolerance | IS:6477-1990 |
| Specification / Cut length | 6000mm(6 MTR) |
| Colour | Natural Silver |
| Application | Machine Structure Frame, Work Table, Machine Cover, Conveyor Base Frame, Door Frame, etc., |



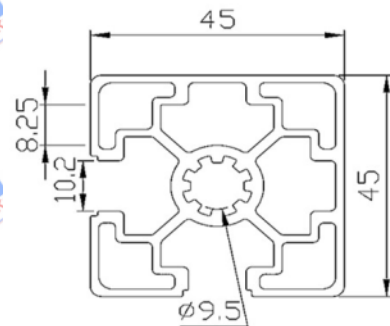
PART NO WE AP 45452C S10

SLOT 10
45 x 45 2C



Technical Data

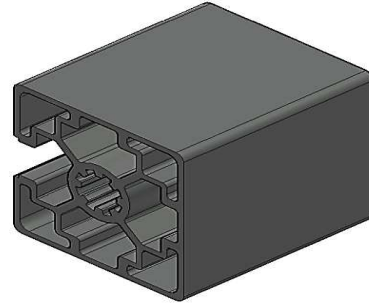
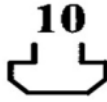
| | |
|----------------------------|--|
| Material - Alloy & Temper | 6063 T6 |
| Surface Processing | Anodised |
| Area Sq.mm | 601.1 |
| Perimeter in mm | 264.7 |
| Unspecified Tolerance | IS:6477-1990 |
| Specification / Cut length | 6000mm(6 MTR) |
| Colour | Natural Silver |
| Application | Machine Structure Frame, Work Table, Machine Cover, Conveyor Base Frame, Door Frame, etc., |



PART NO WE AP 45453C S10

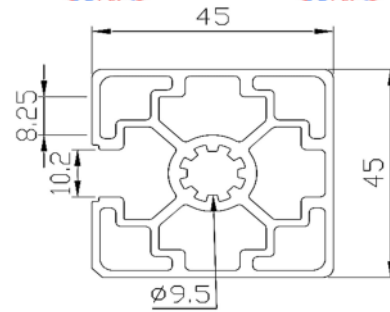
SLOT 10

45 x 45 3C



Technical Data

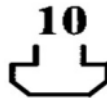
| | |
|----------------------------|--|
| Material - Alloy & Temper | 6063 T6 |
| Surface Processing | Anodised |
| Area Sq.mm | 619.5 |
| Perimeter in mm | 220.6 |
| Unspecified Tolerance | IS:6477-1990 |
| Specification / Cut length | 6000mm(6 MTR) |
| Colour | Natural Silver |
| Application | Machine Structure Frame, Work Table, Machine Cover, Conveyor Base Frame ,Door Frame, etc., |



PART NO WE AP 4545R S10

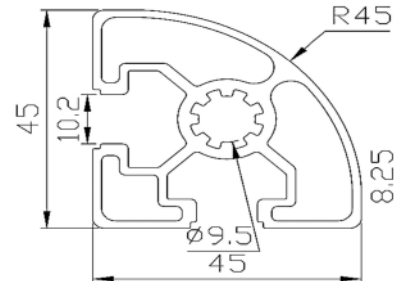
SLOT 10

45 x 45 R



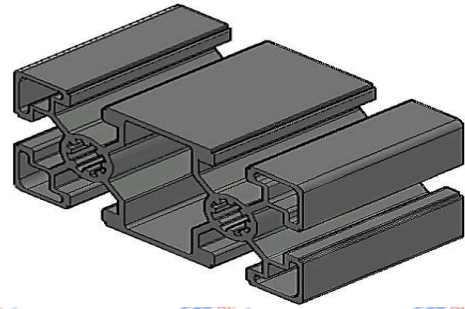
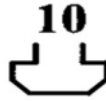
Technical Data

| | |
|----------------------------|--|
| Material - Alloy & Temper | 6063 T6 |
| Surface Processing | Anodised |
| Area Sq.mm | 482.8 |
| Perimeter in mm | 249.1 |
| Unspecified Tolerance | IS:6477-1990 |
| Specification / Cut length | 6000mm(6 MTR) |
| Colour | Natural Silver |
| Application | Machine Structure Frame, Work Table, Machine Cover, Conveyor Base Frame ,Door Frame, etc., |



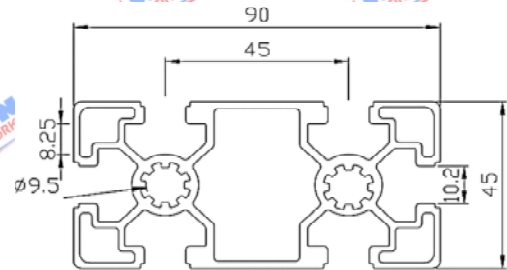
PART NO WE AP 4590 S10

SLOT 10
45 x 90



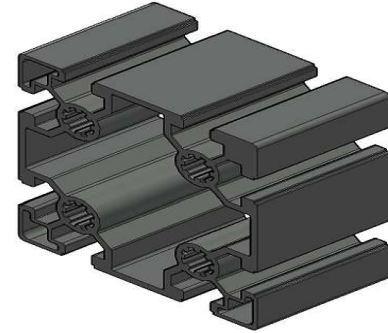
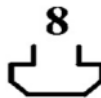
Technical Data

| | |
|----------------------------|--|
| Material - Alloy & Temper | 6063 T6 |
| Surface Processing | Anodised |
| Area Sq.mm | 1028.7 |
| Perimeter in mm | 531.1 |
| Unspecified Tolerance | IS:6477-1990 |
| Specification / Cut length | 6000mm(6 MTR) |
| Colour | Natural Silver |
| Application | Machine Structure Frame, Work Table, Machine Cover, Conveyor Base Frame, Door Frame, etc., |



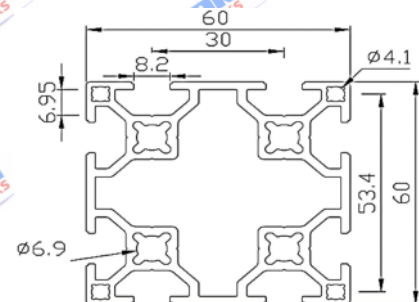
PART NO WE AP 6060 S8

SLOT 8
60 x 60 S8



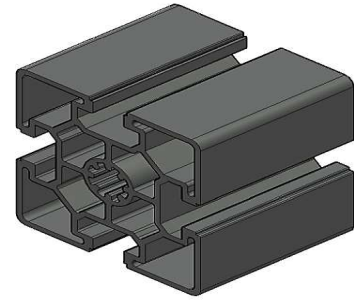
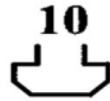
Technical Data

| | |
|----------------------------|--|
| Material - Alloy & Temper | 6063 T6 |
| Surface Processing | Anodised |
| Area Sq.mm | 904.5 |
| Perimeter in mm | 475.9 |
| Unspecified Tolerance | IS:6477-1990 |
| Specification / Cut length | 6000mm(6 MTR) |
| Colour | Natural Silver |
| Application | Machine Structure Frame, Work Table, Machine Cover, Conveyor Base Frame, Door Frame, etc., |



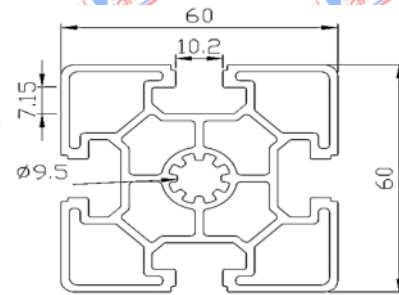
PART NO WE AP 6060 S10

SLOT 10
60 x 60



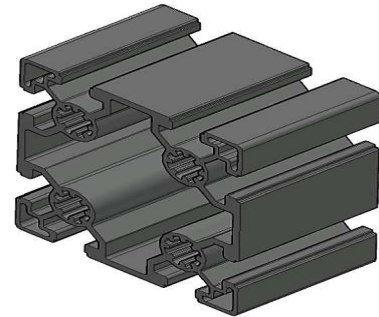
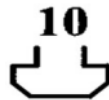
Technical Data

| | |
|----------------------------|--|
| Material - Alloy & Temper | 6063 T6 |
| Surface Processing | Anodised |
| Area Sq.mm | 960.8 |
| Perimeter in mm | 400.7 |
| Unspecified Tolerance | IS:6477-1990 |
| Specification / Cut length | 6000mm(6 MTR) |
| Colour | Natural Silver |
| Application | Machine Structure Frame, Work Table, Machine Cover, Conveyor Base Frame, Door Frame, etc., |



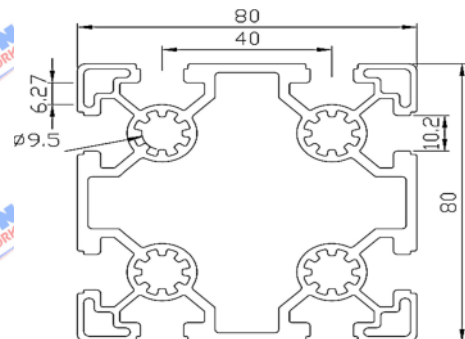
PART NO WE AP 8080 S10

SLOT 10
80 x 80



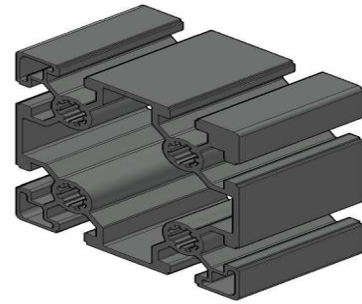
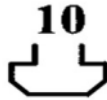
Technical Data

| | |
|----------------------------|--|
| Material - Alloy & Temper | 6063 T6 |
| Surface Processing | Anodised |
| Area Sq.mm | 1469.3 |
| Perimeter in mm | 631.4 |
| Unspecified Tolerance | IS:6477-1990 |
| Specification / Cut length | 6000mm(6 MTR) |
| Colour | Natural Silver |
| Application | Machine Structure Frame, Work Table, Machine Cover, Conveyor Base Frame, Door Frame, etc., |



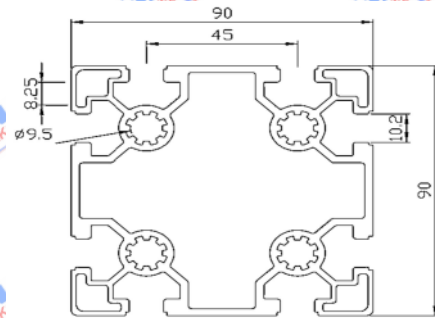
PART NO WE AP 9090 S10

SLOT 10
90 x 90



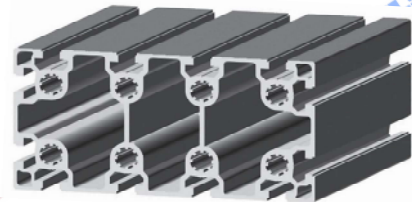
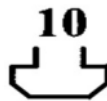
Technical Data

| | |
|----------------------------|--|
| Material - Alloy & Temper | 6063 T6 |
| Surface Processing | Anodised |
| Area Sq.mm | 1721.9 |
| Perimeter in mm | 709.3 |
| Unspecified Tolerance | IS:6477-1990 |
| Specification / Cut length | 6000mm(6 MTR) |
| Colour | Natural Silver |
| Application | Machine Structure Frame, Work Table, Machine Cover, Conveyor Base Frame, Door Frame, etc., |



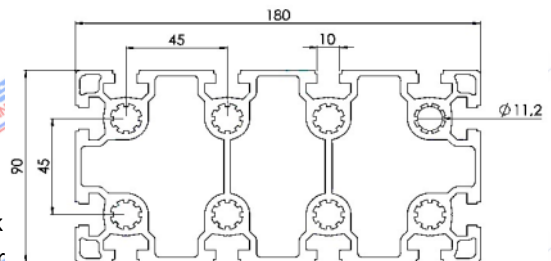
PART NO WE AP 80160 S10

SLOT 10
80 x 160



Technical Data

| | |
|----------------------------|--|
| Material - Alloy & Temper | 6063 T6 |
| Surface Processing | Anodised |
| Area Sq.mm | 2960 |
| Perimeter in mm | 1264 |
| Unspecified Tolerance | IS:6477-1990 |
| Specification / Cut length | 6000mm(6 MTR) |
| Colour | Natural Silver |
| Application | Machine Structure Frame, Work Table, Machine Cover, Conveyor Base Frame, Door Frame, etc., |



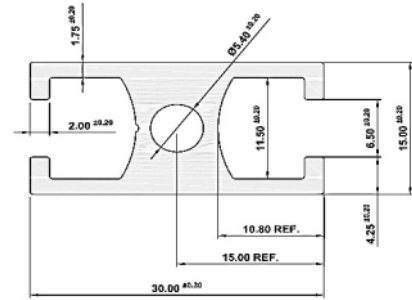
PART NO WE AP 1530

**SLOT 6
15 x 30**



Technical Data

| | |
|----------------------------|--|
| Material - Alloy & Temper | 6063 T6 |
| Surface Processing | Anodised |
| Area Sq.mm | 211 |
| Perimeter in mm | 163 |
| Unspecified Tolerance | IS:6477-1990 |
| Specification / Cut length | 6000mm(6 MTR) |
| Colour | Natural Silver |
| Application | Machine Structure Frame, Work Table, Machine Cover, Conveyor Base Frame, Door Frame, etc., |

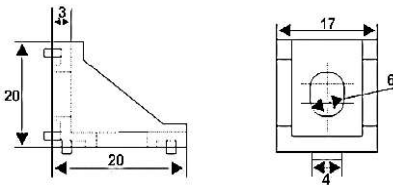
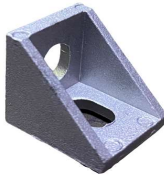


ANGLE BRACKET



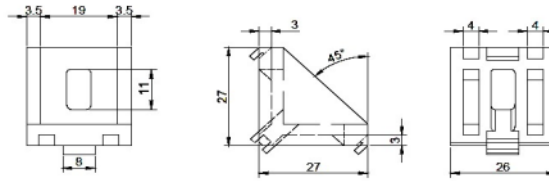
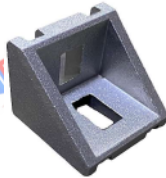
| MATERIAL | FINISH | APPLICATION |
|----------------|----------|--|
| DIE CAST ALLOY | ANODISED | Angle Bracket used to connect Tslot profiles to construct structure frames , etc |

| | |
|----------------------|------------------|
| ANGLE BRACKET | 20 Series |
|----------------------|------------------|



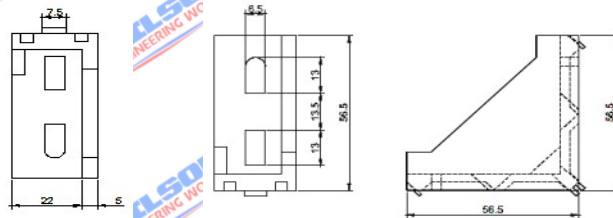
| DESCRIPTION | PART NO | SLOT | FINISH |
|---------------|------------|------|----------|
| ANGLE BRACKET | WE-AB-2020 | 6 | ANODIZED |

| | |
|----------------------|------------------|
| ANGLE BRACKET | 30 Series |
|----------------------|------------------|



| DESCRIPTION | PART NO | SLOT | FINISH |
|---------------|------------|------|----------|
| ANGLE BRACKET | WE-AB-3030 | 8 | ANODIZED |

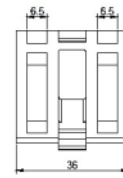
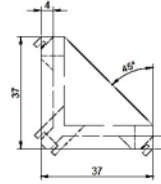
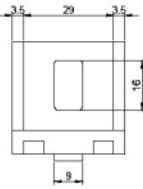
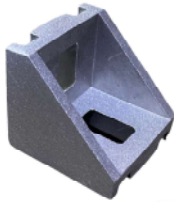
| | |
|----------------------|-----------------------|
| ANGLE BRACKET | 30 x 60 Series |
|----------------------|-----------------------|



| DESCRIPTION | PART NO | SLOT | FINISH |
|---------------|------------|------|----------|
| ANGLE BRACKET | WE-AB-3060 | 8 | ANODIZED |

ANGLE BRACKET

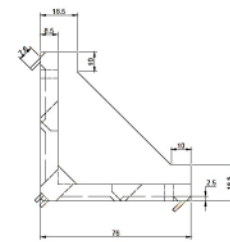
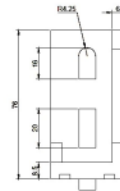
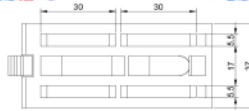
40 Series



| DESCRIPTION | PART NO | SLOT | FINISH |
|---------------|------------|------|----------|
| ANGLE BRACKET | WE-AB-4040 | 10 | ANODIZED |

ANGLE BRACKET

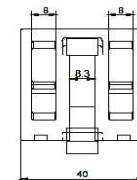
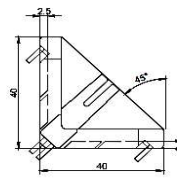
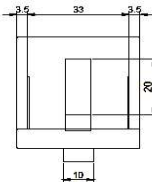
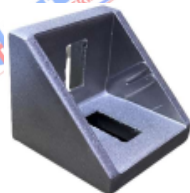
40 x 80 Series



| DESCRIPTION | PART NO | SLOT | FINISH |
|---------------|------------|------|----------|
| ANGLE BRACKET | WE-AB-4080 | 10 | ANODIZED |

ANGLE BRACKET

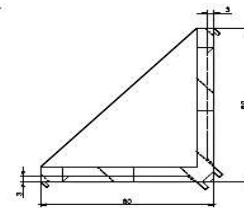
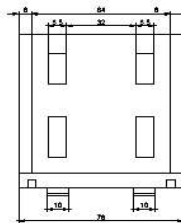
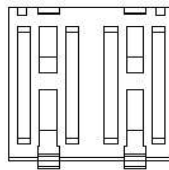
45 Series



| DESCRIPTION | PART NO | SLOT | FINISH |
|---------------|------------|------|----------|
| ANGLE BRACKET | WE-AB-4545 | 10 | ANODIZED |

ANGLE BRACKET

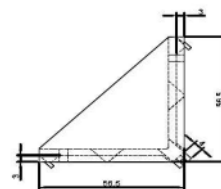
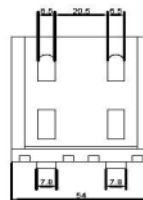
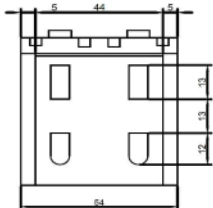
45 x 90 Series



| DESCRIPTION | PART NO | SLOT | FINISH |
|---------------|------------|------|----------|
| ANGLE BRACKET | WE-AB-4590 | 10 | ANODIZED |

ANGLE BRACKET

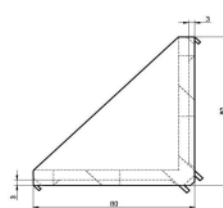
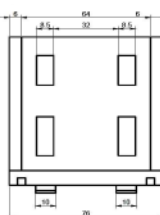
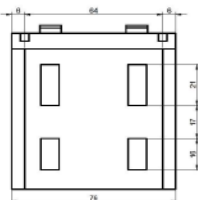
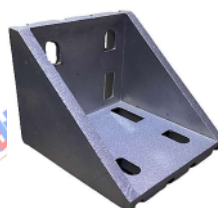
60 Series



| DESCRIPTION | PART NO | SLOT | FINISH |
|---------------|------------|------|----------|
| ANGLE BRACKET | WE-AB-6060 | 10 | ANODIZED |

ANGLE BRACKET

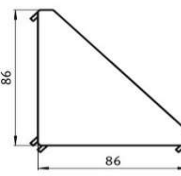
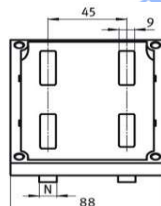
80 Series



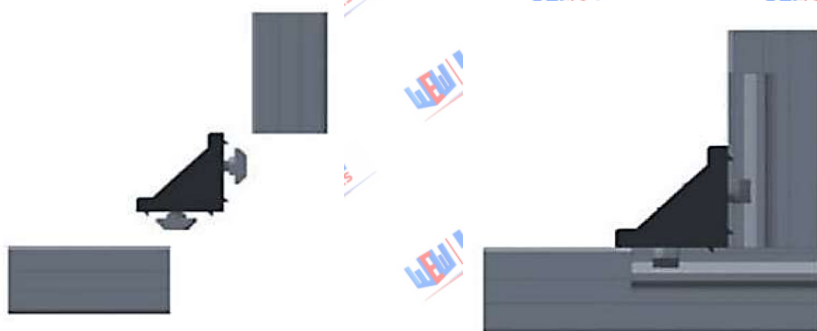
| DESCRIPTION | PART NO | SLOT | FINISH |
|---------------|------------|------|----------|
| ANGLE BRACKET | WE-AB-8080 | 10 | ANODIZED |

ANGLE BRACKET

90 Series



| DESCRIPTION | PART NO | SLOT | FINISH |
|---------------|------------|------|----------|
| ANGLE BRACKET | WE-AB-9090 | 10 | ANODIZED |

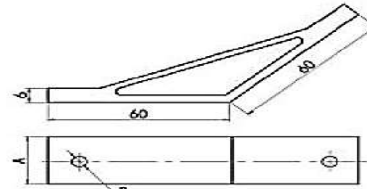


DEGREE BRACKET



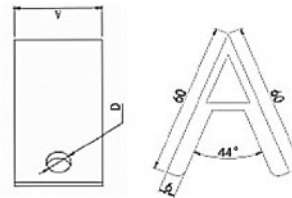
| MATERIAL | FINISH | APPLICATION |
|-----------|----------|---|
| ALUMINIUM | ANODISED | Degree Bracket Used for Angular Joints. |

| | |
|-----------------------|-------------|
| DEGREE BRACKET | 135° |
|-----------------------|-------------|



| DESCRIPTION | PART NO | DIMENSION | FINISH |
|----------------|---------------|--------------|----------|
| DEGREE BRACKET | WE-DB-30-135° | A-20 / D-6 | ANODIZED |
| DEGREE BRACKET | WE-DB-40-135° | A-35 / D-8.5 | ANODIZED |
| DEGREE BRACKET | WE-DB-35-135° | A-40 / D-8.5 | ANODIZED |

| | |
|-----------------------|------------|
| DEGREE BRACKET | 45° |
|-----------------------|------------|



| DESCRIPTION | PART NO | DIMENSION | FINISH |
|----------------|--------------|--------------|----------|
| DEGREE BRACKET | WE-DB-30-45° | A-20 / D-6 | ANODIZED |
| DEGREE BRACKET | WE-DB-40-45° | A-35 / D-8.5 | ANODIZED |
| DEGREE BRACKET | WE-DB-35-45° | A-40 / D-8.5 | ANODIZED |



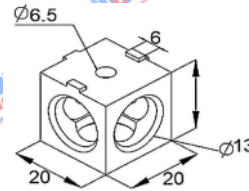
3 WAY CORNER CONNECTOR



| MATERIAL | FINISH | APPLICATION |
|-----------|----------|---|
| ALUMINIUM | ANODISED | 3 Way Corner Connector will connect three profiles in single block. |

3 WAY CORNER CONNECTOR

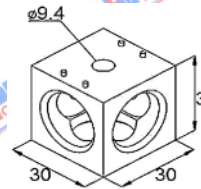
20 SERIES



| DESCRIPTION | PART NO | SIZE | FINISH |
|-----------------------|-----------|------|----------|
| 3WAY CORNER CONNECTOR | WE-3WC-20 | 20 | ANODIZED |

3 WAY CORNER CONNECTOR

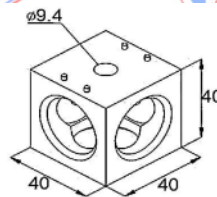
30 SERIES



| DESCRIPTION | PART NO | SIZE | FINISH |
|-----------------------|-----------|------|----------|
| 3WAY CORNER CONNECTOR | WE-3WC-30 | 30 | ANODIZED |

3 WAY CORNER CONNECTOR

40 SERIES



| DESCRIPTION | PART NO | SIZE | FINISH |
|-----------------------|-----------|------|----------|
| 3WAY CORNER CONNECTOR | WE-3WC-40 | 40 | ANODIZED |



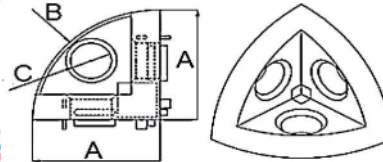
CORNER RADIUS BRACKET



| MATERIAL | FINISH | APPLICATION |
|-----------|----------|--|
| ALUMINIUM | ANODISED | Corner Radius Bracket will connect three profiles in single block. |

3 WAY CORNER CONNECTOR

20 / 30 / 40 / 45 Series



| DESCRIPTION | PART NO | A | B | C | FINISH |
|-----------------------|----------|------|----|------|----------|
| CORNER RADIUS BRACKET | WE-CB-20 | 18.5 | 20 | 6 | ANODIZED |
| CORNER RADIUS BRACKET | WE-CB-30 | 28.5 | 30 | 9 | ANODIZED |
| CORNER RADIUS BRACKET | WE-CB-40 | 38.5 | 40 | 9 | ANODIZED |
| CORNER RADIUS BRACKET | WE-CB-45 | 43.5 | 45 | 12.5 | ANODIZED |

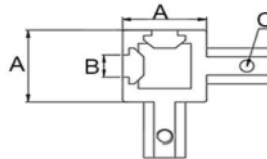
3 WAY CORNER BRACKET



| MATERIAL | FINISH | APPLICATION |
|-----------|--------|---|
| ALUMINIUM | SPRAYE | 3 Way Corner Bracket will connect three profiles in single block. |

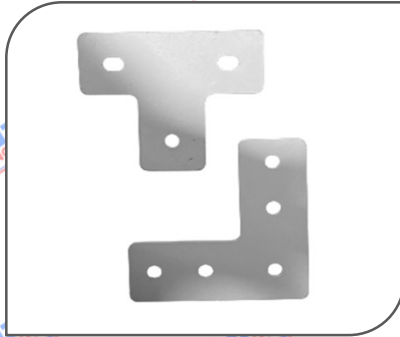
3 WAY CORNER CONNECTOR

20 / 30 / 40 / 45 Series



| DESCRIPTION | PART NO | A | B | C | FINISH |
|----------------------|------------|----|---|---|--------|
| 3 WAY CORNER BRACKET | WE-3WCB-20 | 20 | 6 | 4 | SPRAY |
| 4 WAY CORNER BRACKET | WE-3WCB-30 | 30 | 8 | 6 | SPRAY |
| 5 WAY CORNER BRACKET | WE-3WCB-40 | 40 | 8 | 8 | SPRAY |

METAL PLATE BRACKET



| MATERIAL | FINISH | APPLICATION |
|------------|--------|--|
| MILD STEEL | COATED | Fixing in Outer Surfaces of T-slot Profiles. |

METAL L PLATE

| DESCRIPTION | PART NO | SIZE | FINISH |
|---------------|----------|------|--------|
| METAL L PLATE | WE-LP-30 | 30 | COATED |
| METAL L PLATE | WE-LP-40 | 40 | COATED |
| METAL L PLATE | WE-LP-45 | 45 | COATED |

METAL T PLATE

| DESCRIPTION | PART NO | SIZE | FINISH |
|---------------|----------|------|--------|
| METAL T PLATE | WE-TP-30 | 30 | COATED |
| METAL T PLATE | WE-TP-40 | 40 | COATED |
| METAL T PLATE | WE-TP-45 | 45 | COATED |

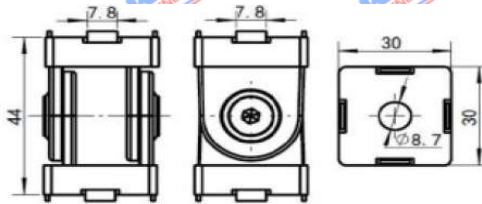


PIVOT JOINT



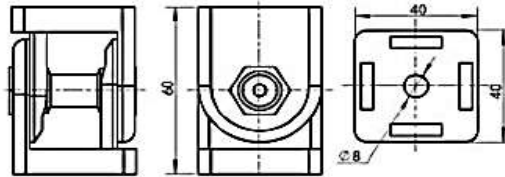
| MATERIAL | FINISH | APPLICATION |
|---------------|--------|--|
| ALLOY / METAL | COATED | Pivot Joint used to Mount profiles in multiple |

PIVOT JOINT **30 SERIES**



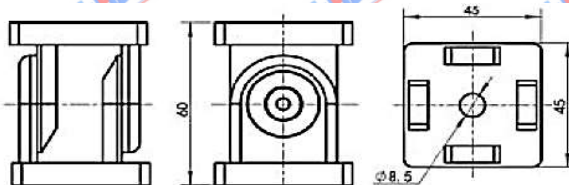
| DESCRIPTION | PART NO | SIZE | FINISH |
|-------------|----------|------|--------|
| PIVOT JOINT | WE-PJ-30 | 30 | COATED |

PIVOT JOINT **40 SERIES**



| DESCRIPTION | PART NO | SIZE | FINISH |
|-------------|----------|------|--------|
| PIVOT JOINT | WE-PJ-40 | 40 | COATED |

PIVOT JOINT **45 SERIES**



| DESCRIPTION | PART NO | SIZE | FINISH |
|-------------|----------|------|--------|
| PIVOT JOINT | WE-PJ-45 | 45 | COATED |



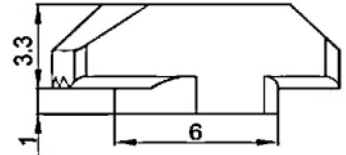
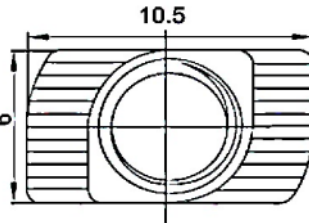


HAMMER HEAD T-NUT

| MATERIAL | FINISH | APPLICATION |
|--------------|--------------------------------------|---|
| CARBON STEEL | NICKEL PLATED(NP) ZINC PLATED(ZP) | Hammer Head T-Nut used by swiveling into the groove ,fits into the Tslot at any point for Fixing brackets ,Plates or any other accessories. |

HAMMER HEAD T-NUT

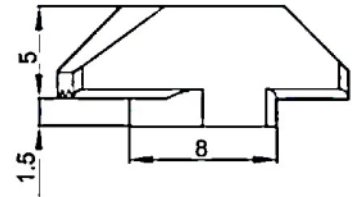
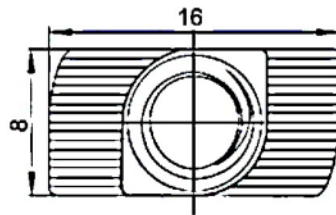
SLOT 6 / 20 SERIES



| DESCRIPTION | PART NO | THREAD | FINISH |
|---------------|-------------|--------|---------|
| TNUT / SLOT 6 | WE-TN-20-M3 | M3 | NP / ZP |
| TNUT / SLOT 6 | WE-TN-20-M4 | M4 | NP / ZP |
| TNUT / SLOT 6 | WE-TN-20-M5 | M5 | NP / ZP |

HAMMER HEAD T-NUT

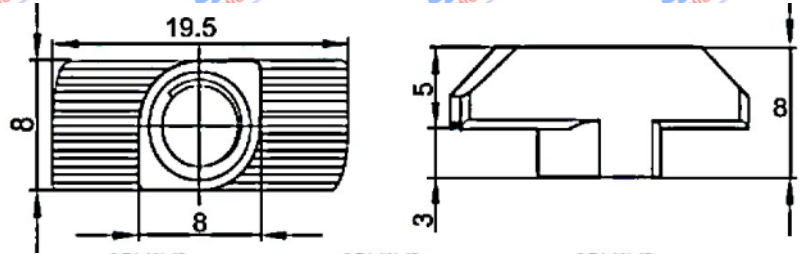
SLOT 8 / 30 & 60 SERIES



| DESCRIPTION | PART NO | THREAD | FINISH |
|---------------|-------------|--------|---------|
| TNUT / SLOT 8 | WE-TN-30-M3 | M3 | NP / ZP |
| TNUT / SLOT 8 | WE-TN-30-M4 | M4 | NP / ZP |
| TNUT / SLOT 8 | WE-TN-30-M5 | M5 | NP / ZP |
| TNUT / SLOT 8 | WE-TN-30-M6 | M6 | NP / ZP |

HAMMER HEAD T-NUT

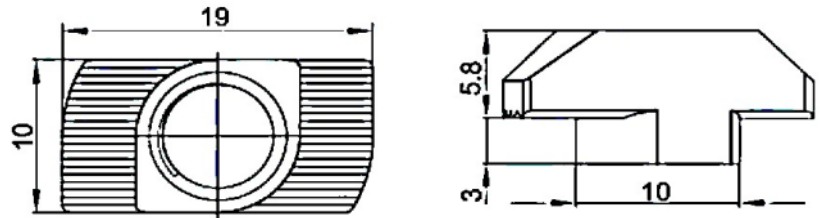
SLOT 8 / 40 SERIES



| DESCRIPTION | PART NO | THREAD | FINISH |
|---------------|-------------|--------|---------|
| TNUT / SLOT 8 | WE-TN-40-M4 | M4 | NP / ZP |
| TNUT / SLOT 8 | WE-TN-40-M5 | M5 | NP / ZP |
| TNUT / SLOT 8 | WE-TN-40-M6 | M6 | NP / ZP |

HAMMER HEAD T-NUT

SLOT 10 / 40, 45, 80, 90 SERIES

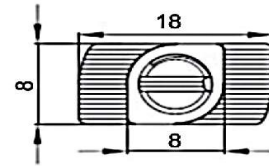
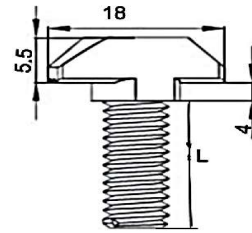


| DESCRIPTION | PART NO | THREAD | FINISH |
|----------------|----------------|--------|---------|
| TNUT / SLOT 10 | WE-TN-40/45-M4 | M4 | NP / ZP |
| TNUT / SLOT 10 | WE-TN-40/45-M5 | M5 | NP / ZP |
| TNUT / SLOT 10 | WE-TN-40/45-M6 | M6 | NP / ZP |
| TNUT / SLOT 10 | WE-TN-40/45-M8 | M8 | NP / ZP |



T-BOLT

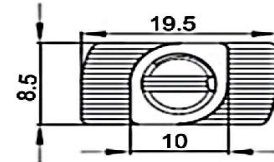
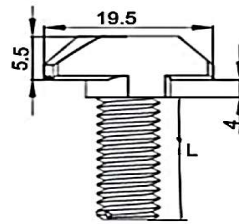
SLOT 8 / 40 Series



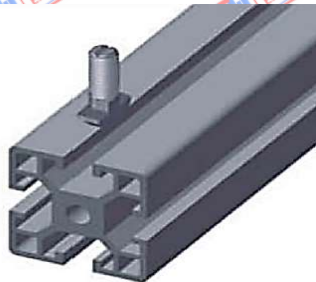
| DESCRIPTION | PART NO | LENGTH | FINISH |
|--------------------|----------------|--------|---------|
| T-BOLT / SLOT 8-40 | WE-TB-40-M8x16 | 16 | NP / ZP |
| T-BOLT / SLOT 8-40 | WE-TB-40-M8x20 | 20 | NP / ZP |
| T-BOLT / SLOT 8-40 | WE-TB-40-M8x25 | 25 | NP / ZP |

T-BOLT

SLOT 10 / 40, 45, 80, 90 SERIES



| DESCRIPTION | PART NO | THREAD | FINISH |
|-----------------|-------------------|--------|---------|
| T-BOLT /SLOT 10 | WE-TB-40/45-M8x16 | 16 | NP / ZP |
| T-BOLT /SLOT 10 | WE-TB-40/45-M8x20 | 20 | NP / ZP |
| T-BOLT /SLOT 10 | WE-TB-40/45-M8x25 | 25 | NP / ZP |
| T-BOLT /SLOT 10 | WE-TB-40/45-M8x30 | 30 | NP / ZP |
| T-BOLT /SLOT 10 | WE-TB-40/45-M8x35 | 35 | NP / ZP |
| T-BOLT /SLOT 10 | WE-TB-40/45-M8x40 | 40 | NP / ZP |
| T-BOLT /SLOT 10 | WE-TB-40/45-M8x45 | 45 | NP / ZP |



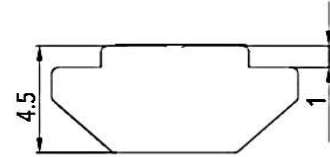
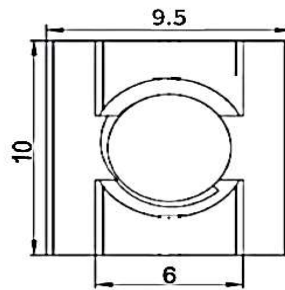
SLIDING NUT



| MATERIAL | FINISH | APPLICATION |
|--------------|--------------------------------------|--|
| CARBON STEEL | NICKEL PLATED(NP) ZINC PLATED(ZP) | Sliding Nut used by Sliding into the groove ,fits into the Tslot at any point for Fixing Fixtures ,Blocks Plates or any other accessories. |

SLIDING NUT

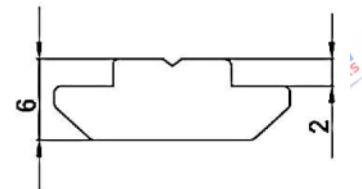
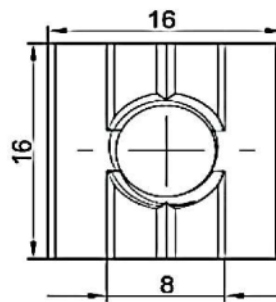
SLOT 6 / 20 SERIES



| DESCRIPTION | PART NO | THREAD | FINISH |
|----------------------|-------------|--------|---------|
| SLIDING NUT / SLOT 6 | WE-SN-20-M3 | M3 | NP / ZP |
| SLIDING NUT / SLOT 6 | WE-SN-20-M4 | M4 | NP / ZP |
| SLIDING NUT / SLOT 6 | WE-SN-20-M5 | M5 | NP / ZP |

SLIDING NUT

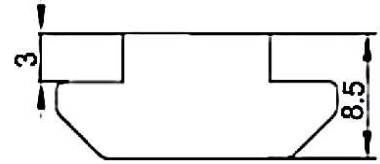
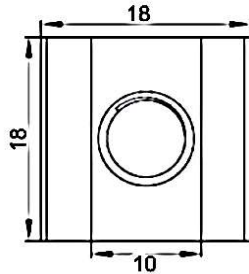
SLOT 8 / 30 & 60 SERIES



| DESCRIPTION | PART NO | THREAD | FINISH |
|---------------|-------------|--------|---------|
| TNUT / SLOT 8 | WE-TN-30-M4 | M4 | NP / ZP |
| TNUT / SLOT 8 | WE-TN-30-M5 | M5 | NP / ZP |
| TNUT / SLOT 8 | WE-TN-30-M6 | M6 | NP / ZP |

SLIDING NUT

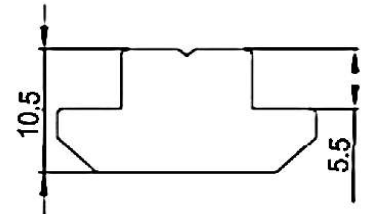
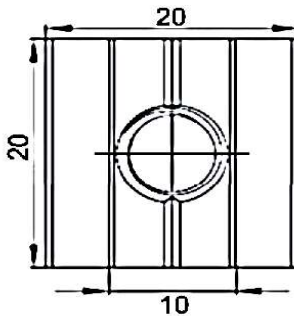
SLOT 10 / H SERIES



| DESCRIPTION | PART NO | THREAD | FINISH |
|-------------------------|--------------|--------|---------|
| SLIDING NUT / SLOT 10 H | WE-SN-40H-M4 | M4 | NP / ZP |
| SLIDING NUT / SLOT 10 H | WE-SN-40H-M5 | M5 | NP / ZP |
| SLIDING NUT / SLOT 10 H | WE-SN-40H-M6 | M6 | NP / ZP |

SLIDING NUT

SLOT 10 / 40, 45, 80, 90 SERIES



| DESCRIPTION | PART NO | THREAD | FINISH |
|-----------------------|-------------|--------|---------|
| SLIDING NUT / SLOT 10 | WE-SN-45-M3 | M3 | NP / ZP |
| SLIDING NUT / SLOT 10 | WE-SN-45-M4 | M4 | NP / ZP |
| SLIDING NUT / SLOT 10 | WE-SN-45-M5 | M5 | NP / ZP |
| SLIDING NUT / SLOT 11 | WE-SN-45-M6 | M6 | NP / ZP |
| SLIDING NUT / SLOT 12 | WE-SN-45-M8 | M8 | NP / ZP |



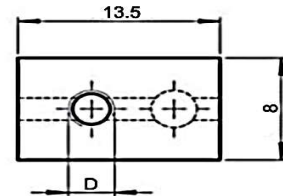
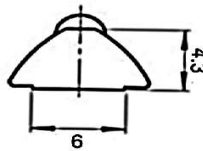
SPRING BALL NUT



| MATERIAL | FINISH | APPLICATION |
|--------------|--------------------------------------|--|
| CARBON STEEL | NICKEL PLATED(NP) ZINC PLATED(ZP) | Spring Ball Nut used by Sliding into the groove ,fits into the Tslot at any point for Fixing Fixtures ,Blocks Plates or any other accessories. |

SPRING BALL NUT

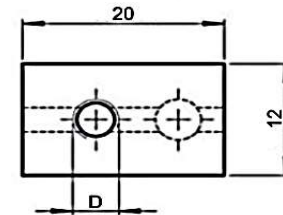
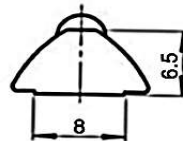
SLOT 6 / 20 SERIES



| DESCRIPTION | PART NO | THREAD-(D) | FINISH |
|-------------------------|--------------|------------|---------|
| SPRING BALL NUT / SLOT6 | WE-SBN-20-M3 | M3 | NP / ZP |
| SPRING BALL NUT / SLOT6 | WE-SBN-20-M4 | M4 | NP / ZP |
| SPRING BALL NUT / SLOT6 | WE-SBN-20-M5 | M5 | NP / ZP |

SPRING BALL NUT

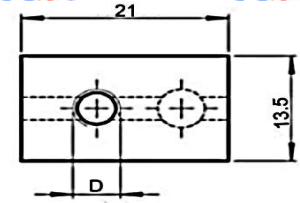
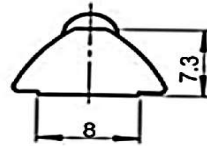
SLOT 8 / 30 & 60 SERIES



| DESCRIPTION | PART NO | THREAD-(D) | FINISH |
|-------------------------|--------------|------------|---------|
| SPRING BALL NUT / SLOT8 | WE-SBN-30-M4 | M4 | NP / ZP |
| SPRING BALL NUT / SLOT8 | WE-SBN-30-M5 | M5 | NP / ZP |
| SPRING BALL NUT / SLOT8 | WE-SBN-30-M6 | M6 | NP / ZP |

SPRING BALL NUT

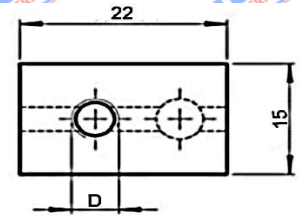
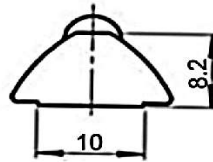
SLOT 8 / 40 SERIES



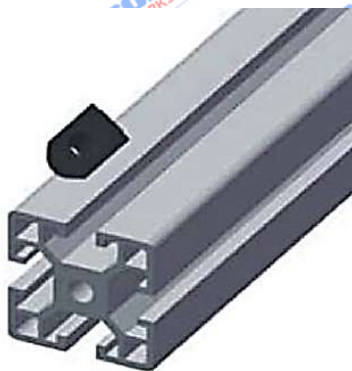
| DESCRIPTION | PART NO | THREAD-(D) | FINISH |
|----------------------------|--------------|------------|---------|
| SPRING BALL NUT / SLOT8-40 | WE-SBN-40-M5 | M5 | NP / ZP |
| SPRING BALL NUT / SLOT8-40 | WE-SBN-40-M6 | M6 | NP / ZP |
| SPRING BALL NUT / SLOT8-40 | WE-SBN-40-M8 | M8 | NP / ZP |

SPRING BALL NUT

SLOT 10 / 40, 45, 80, 90 SERIES



| DESCRIPTION | PART NO | THREAD-(D) | FINISH |
|---------------------------|--------------|------------|---------|
| SPRING BALL NUT / SLOT 10 | WE-SBN-45-M5 | M3 | NP / ZP |
| SPRING BALL NUT / SLOT 10 | WE-SBN-45-M6 | M4 | NP / ZP |
| SPRING BALL NUT / SLOT 10 | WE-SBN-45-M8 | M5 | NP / ZP |



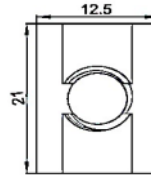
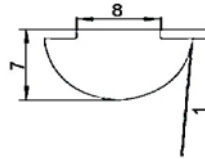


SPRING LEAF NUT

| MATERIAL | FINISH | APPLICATION |
|--------------|--------------------------------------|---|
| CARBON STEEL | NICKEL PLATED(NP) ZINC PLATED(ZP) | Spring lLeaf Nut used by Sliding into the groove ,fits into the Tslot at any point for Fixing Fixtures ,Blocks Plates or any other accessories. |

SPRING LEAF NUT

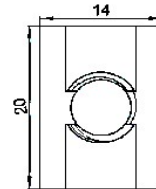
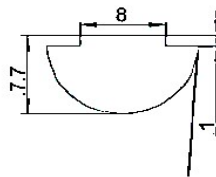
SLOT 8 / 30 & 60 SERIES



| DESCRIPTION | PART NO | THREAD-(D) | FINISH |
|-------------------------|--------------|------------|---------|
| SPRING LEAF NUT / SLOT8 | WE-SLN-30-M4 | M4 | NP / ZP |
| SPRING LEAF NUT / SLOT8 | WE-SLN-30-M5 | M5 | NP / ZP |
| SPRING LEAF NUT / SLOT8 | WE-SLN-30-M6 | M6 | NP / ZP |

SPRING LEAF NUT

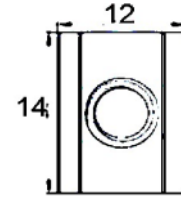
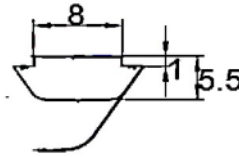
SLOT 8A / 40 SERIES



| DESCRIPTION | PART NO | THREAD-(D) | FINISH |
|------------------------------|---------------|------------|---------|
| SPRING LEAF NUT / SLOT8A -40 | WE-SLN-40A-M5 | M5 | NP / ZP |
| SPRING LEAF NUT / SLOT8A -40 | WE-SLN-40A-M6 | M6 | NP / ZP |
| SPRING LEAF NUT / SLOT8A -40 | WE-SLN-40A-M8 | M8 | NP / ZP |

SPRING LEAF NUT

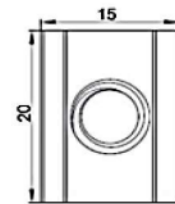
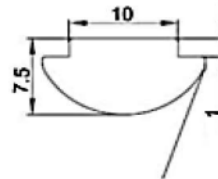
SLOT 8B / 40 SERIES



| DESCRIPTION | PART NO | THREAD-(D) | FINISH |
|------------------------------|---------------|------------|---------|
| SPRING LEAF NUT / SLOT8B -40 | WE-SLN-40B-M5 | M5 | NP / ZP |
| SPRING LEAF NUT / SLOT8B -40 | WE-SLN-40B-M6 | M6 | NP / ZP |
| SPRING LEAF NUT / SLOT8B -40 | WE-SLN-40B-M8 | M8 | NP / ZP |

SPRING LEAF NUT

SLOT 10 / 40, 45, 80, 90 SERIES



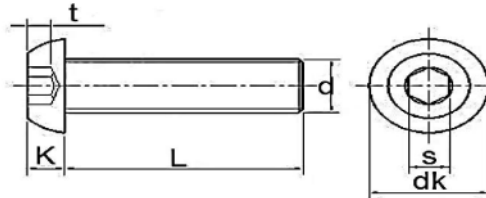
| DESCRIPTION | PART NO | THREAD-(D) | FINISH |
|---------------------------|--------------|------------|---------|
| SPRING LEAF NUT / SLOT 10 | WE-SLN-45-M5 | M5 | NP / ZP |
| SPRING LEAF NUT / SLOT 10 | WE-SLN-45-M6 | M6 | NP / ZP |
| SPRING LEAF NUT / SLOT 10 | WE-SLN-45-M8 | M8 | NP / ZP |



BUTTON HEAD SCREW



| MATERIAL | FINISH | APPLICATION |
|--------------|--------------------------------------|---|
| CARBON STEEL | NICKEL PLATED(NP) ZINC PLATED(ZP) | Button Head Screw used for assembling plates , brackets with T-nut. |

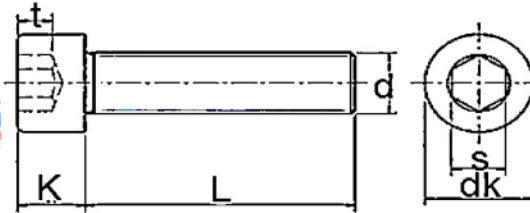


| PART NO | SIZE | t | k | d | dk | s |
|------------|------|---|-----|---|-----|---|
| WE-BHS 58 | M5 | 3 | 2.5 | 5 | 9.5 | 3 |
| WE-BHS 510 | | | | | | |
| WE-BHS 512 | | | | | | |
| WE-BHS 516 | | | | | | |
| WE-BHS 520 | | | | | | |
| WE-BHS 525 | | | | | | |
| WE-BHS 530 | M6 | 4 | 3 | 6 | 10 | 4 |
| WE-BHS 610 | | | | | | |
| WE-BHS 612 | | | | | | |
| WE-BHS 616 | | | | | | |
| WE-BHS 620 | | | | | | |
| WE-BHS 625 | | | | | | |
| WE-BHS 630 | M8 | 5 | 4 | 8 | 13 | 5 |
| WE-BHS 635 | | | | | | |
| WE-BHS 640 | | | | | | |
| WE-BHS 812 | | | | | | |
| WE-BHS 816 | | | | | | |
| WE-BHS 820 | | | | | | |
| WE-BHS 825 | | | | | | |
| WE-BHS 830 | | | | | | |
| WE-BHS 835 | | | | | | |
| WE-BHS 840 | | | | | | |

ALLEN HEAD SCREW



| MATERIAL | FINISH | APPLICATION |
|--------------|--------------------------------------|---|
| CARBON STEEL | NICKEL PLATED(NP) ZINC PLATED(ZP) | Button Head Screw used for assembling plates , brackets with T-nut. |



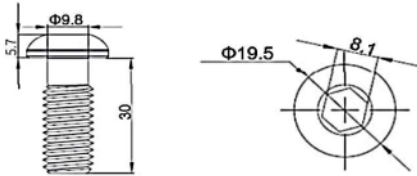
| PART NO | SIZE | t | k | d | dk | s |
|------------|------|-----|---|---|------|---|
| WE-AHS 58 | M5 | 2.5 | 5 | 5 | 8.2 | 4 |
| WE-AHS 510 | | | | | | |
| WE-AHS 512 | | | | | | |
| WE-AHS 516 | | | | | | |
| WE-AHS 520 | | | | | | |
| WE-AHS 525 | | | | | | |
| WE-AHS 530 | M6 | 3 | 5 | 6 | 9.8 | 5 |
| WE-AHS 610 | | | | | | |
| WE-AHS 612 | | | | | | |
| WE-AHS 616 | | | | | | |
| WE-AHS 620 | | | | | | |
| WE-AHS 625 | | | | | | |
| WE-AHS 630 | M8 | 4 | 8 | 8 | 12.7 | 6 |
| WE-AHS 635 | | | | | | |
| WE-AHS 640 | | | | | | |
| WE-AHS 812 | | | | | | |
| WE-AHS 816 | | | | | | |
| WE-AHS 820 | | | | | | |
| WE-AHS 825 | | | | | | |
| WE-AHS 830 | | | | | | |
| WE-AHS 835 | | | | | | |
| WE-AHS 840 | | | | | | |



MUSHROOM BOLT

| MATERIAL | FINISH | APPLICATION |
|--------------|--------------------------------------|--------------------------|
| CARBON STEEL | NICKEL PLATED(NP) ZINC PLATED(ZP) | Used for Profile joints. |

| DESCRIPTION | PART NO | FINISH |
|---------------|-------------|---------|
| MUSHROOM BOLT | WE-BHS 1230 | NP / ZP |



FLANGE NUT

| MATERIAL | FINISH | APPLICATION |
|--------------|--------------------------------------|---------------------------|
| CARBON STEEL | NICKEL PLATED(NP) ZINC PLATED(ZP) | Used for T-Bolt Assembly. |

| DESCRIPTION | PART NO | THREAD-(D) | FINISH |
|-------------|-----------|------------|---------|
| FLANGE NUT | WE-FN-M6 | M6 | NP / ZP |
| FLANGE NUT | WE-FN-M8 | M8 | NP / ZP |
| FLANGE NUT | WE-FN-M10 | M10 | NP / ZP |
| FLANGE NUT | WE-FN-M12 | M12 | NP / ZP |

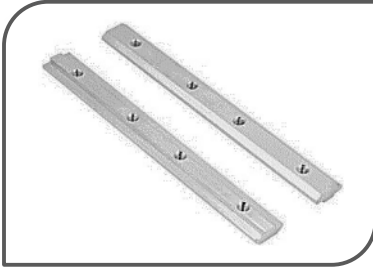


JOINT CLIP

| MATERIAL | FINISH | APPLICATION |
|--------------|--------------------------------------|-------------------------|
| CARBON STEEL | NICKEL PLATED(NP) ZINC PLATED(ZP) | Used for Profile Joints |

| DESCRIPTION | PART NO | SLOT | FINISH |
|-------------|----------|------|---------|
| JOINT CLIP | WE-JC-20 | 6 | NP / ZP |
| JOINT CLIP | WE-JC-30 | 8 | NP / ZP |
| JOINT CLIP | WE-JC-40 | 8 | NP / ZP |

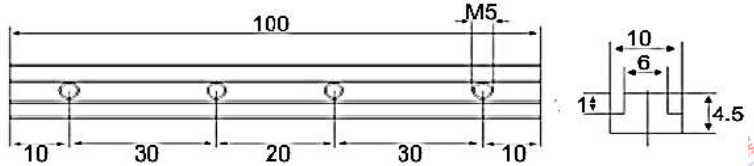
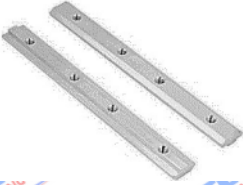
SLIDING PROFILE CONNECTOR



| MATERIAL | FINISH | APPLICATION |
|--------------|--------------------------------------|---|
| CARBON STEEL | NICKEL PLATED(NP) ZINC PLATED(ZP) | Sliding Profile Connector is used to interlink two pieces of T-slot profiles. |

SLIDING PROFILE CONNECTOR

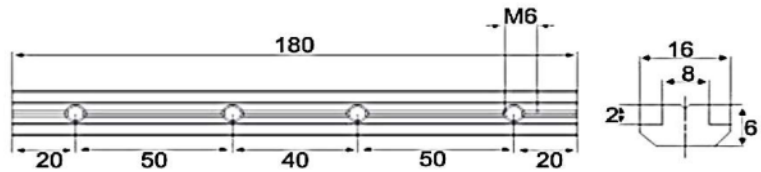
SLOT 6 / 20 SERIES



| DESCRIPTION | PART NO | THREAD-(D) | FINISH |
|---------------------------|-----------|------------|---------|
| SLIDING PROFILE CONNECTOR | WE-SPC-20 | M5 | NP / ZP |

SLIDING PROFILE CONNECTOR

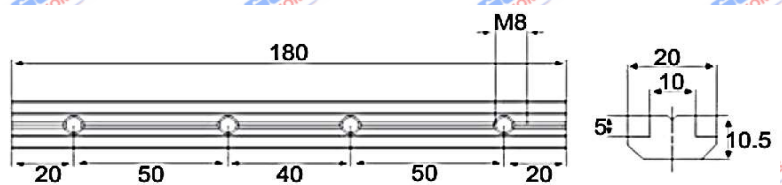
SLOT 8 / 30 & 60 SERIES



| DESCRIPTION | PART NO | THREAD-(D) | FINISH |
|---------------------------|-----------|------------|---------|
| SLIDING PROFILE CONNECTOR | WE-SPC-30 | M6 | NP / ZP |

SLIDING PROFILE CONNECTOR

SLOT 10 / 40, 45, 80, 90 SERIES



| DESCRIPTION | PART NO | THREAD-(D) | FINISH |
|---------------------------|-----------|------------|---------|
| SLIDING PROFILE CONNECTOR | WE-SPC-20 | M8 | NP / ZP |

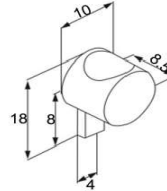


UNIVERSAL CONNECTOR



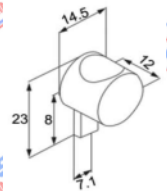
| MATERIAL | FINISH | APPLICATION |
|--------------|--------------------------------------|--|
| CARBON STEEL | NICKEL PLATED(NP) ZINC PLATED(ZP) | To connect Tslot profile for rigid joint . |

UNIVERSAL CONNECTOR SLOT 6 / 20 SERIES



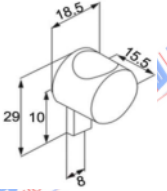
| DESCRIPTION | PART NO | SLOT | FINISH |
|---------------------|----------|------|---------|
| UNIVERSAL CONNECTOR | WE-UC-20 | 6 | NP / ZP |

UNIVERSAL CONNECTOR SLOT 8 / 30 SERIES



| DESCRIPTION | PART NO | SLOT | FINISH |
|---------------------|----------|------|---------|
| UNIVERSAL CONNECTOR | WE-UC-30 | 6 | NP / ZP |

UNIVERSAL CONNECTOR SLOT 10 / 40, 45, 80, 90 SERIES



| DESCRIPTION | PART NO | SLOT | FINISH |
|---------------------|-------------|------|---------|
| UNIVERSAL CONNECTOR | WE-UC-40/45 | 6 | NP / ZP |



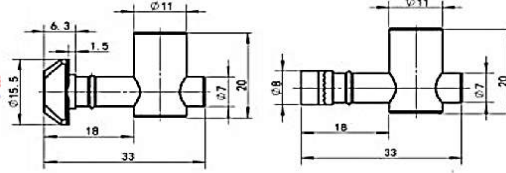
QUICK CONNECTOR



| MATERIAL | FINISH | APPLICATION |
|--------------|--------------------------------------|--|
| CARBON STEEL | NICKEL PLATED(NP) ZINC PLATED(ZP) | Quick Connector used to joint two profiles . |

QUICK CONNECTOR

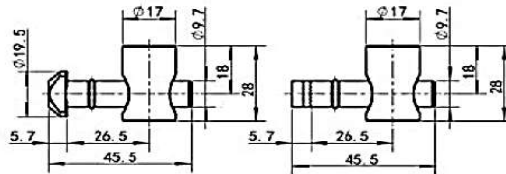
SLOT 8 / 30 & 60 SERIES



| DESCRIPTION | PART NO | SLOT | FINISH |
|-----------------|-------------|------|--------|
| QUICK CONNECTOR | WE-QC-30-0° | 8 | ZP |
| QUICK CONNECTOR | WE-QC-30-0° | 8 | ZP |

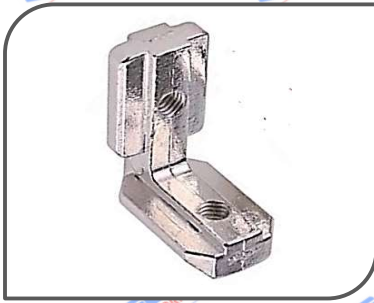
QUICK CONNECTOR

SLOT 10 / 40, 45, 80, 90 SERIES



| DESCRIPTION | PART NO | SLOT | FINISH |
|-----------------|----------------|------|--------|
| QUICK CONNECTOR | WE-QC-40/45-0° | 10 | ZP |
| QUICK CONNECTOR | WE-QC-40/45-0° | 10 | ZP |



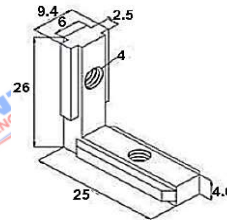


INNER BRACKET

| MATERIAL | FINISH | APPLICATION |
|--------------|--------------------------------------|--|
| CARBON STEEL | NICKEL PLATED(NP) ZINC PLATED(ZP) | Inner Bracket used for assembly structure with hidden joint. |

INNER BRACKET

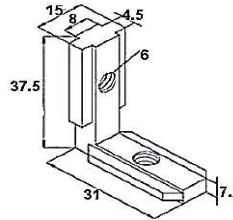
SLOT 6 / 20 SERIES



| DESCRIPTION | PART NO | SLOT | FINISH |
|---------------|----------|------|---------|
| INNER BRACKET | WE-IB-20 | 6 | NP / ZP |

INNER BRACKET

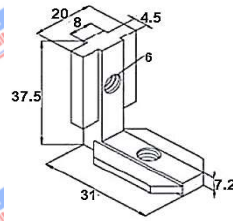
SLOT 8 / 30 & 60 SERIES



| DESCRIPTION | PART NO | SLOT | FINISH |
|---------------|----------|------|---------|
| INNER BRACKET | WE-IB-30 | 8 | NP / ZP |

INNER BRACKET

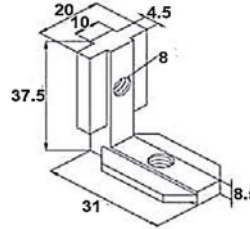
SLOT 10 / 40 SERIES



| DESCRIPTION | PART NO | SLOT | FINISH |
|---------------|----------|------|---------|
| INNER BRACKET | WE-IB-40 | 10 | NP / ZP |

INNER BRACKET

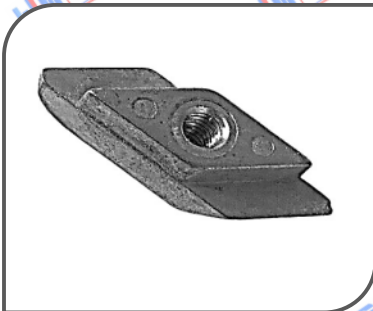
SLOT 10 / 45, 80, 90 SERIES



| DESCRIPTION | PART NO | SLOT | FINISH |
|---------------|----------|------|---------|
| INNER BRACKET | WE-IB-45 | 10 | NP / ZP |



RHOMBUS NUT

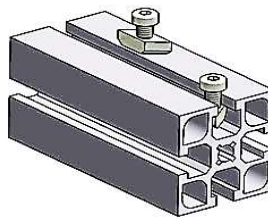


| MATERIAL | FINISH | APPLICATION |
|--------------|--------------------------------------|---|
| CARBON STEEL | NICKEL PLATED(NP) ZINC PLATED(ZP) | Hammer Head T-Nut used by swiveling into the groove ,fits into the Tslot at any point for Fixing brackets ,Plates or any other accessories. |

RHOMBUS NUT

SLOT 6 / 8 / 10

| DESCRIPTION | PART NO | SLOT | FINISH |
|---------------------|----------------|------|---------|
| RHOMBUS NUT SLOT 8 | WE-RN-30-M6 | 8 | NP / ZP |
| RHOMBUS NUT SLOT 10 | WE-RN-40/45-M6 | 10 | NP / ZP |
| RHOMBUS NUT SLOT 10 | WE-RN-40/45-M8 | 10 | NP / ZP |

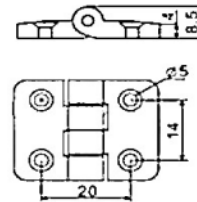
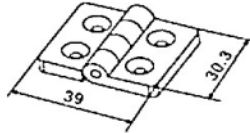


NYLON HINGES



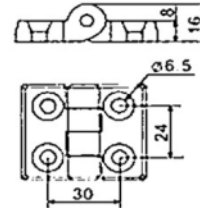
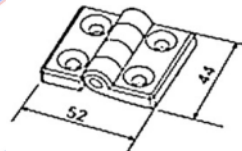
| MATERIAL | COLOUR | APPLICATION |
|----------|--------|--|
| NYLON | BLACK | Nylon Hinges used to mount doors ,frames etc.. |

NYLON HINGES 2020 Series



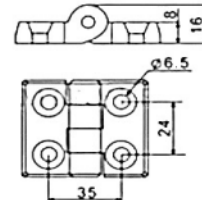
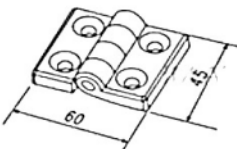
| DESCRIPTION | PART NO | SIZE | COLOUR |
|--------------|------------|------|--------|
| NYLON HINGES | WE-NH-2020 | 2020 | BLACK |

NYLON HINGES 3030 Series



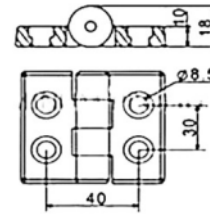
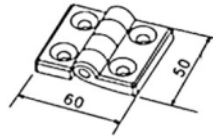
| DESCRIPTION | PART NO | SIZE | COLOUR |
|--------------|------------|------|--------|
| NYLON HINGES | WE-NH-3030 | 3030 | BLACK |

NYLON HINGES 3040 Series



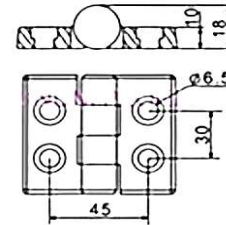
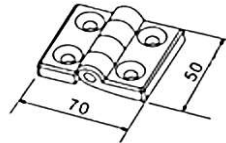
| DESCRIPTION | PART NO | SIZE | COLOUR |
|--------------|------------|------|--------|
| NYLON HINGES | WE-NH-3040 | 3040 | BLACK |

NYLON HINGES **4040 Series**



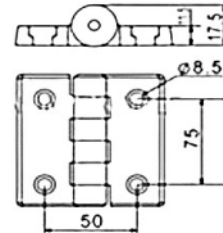
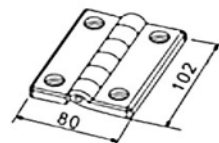
| DESCRIPTION | PART NO | SIZE | COLOUR |
|--------------|------------|------|--------|
| NYLON HINGES | WE-NH-4040 | 4040 | BLACK |

NYLON HINGES **4545 Series**



| DESCRIPTION | PART NO | SIZE | COLOUR |
|--------------|------------|------|--------|
| NYLON HINGES | WE-NH-4545 | 4545 | BLACK |

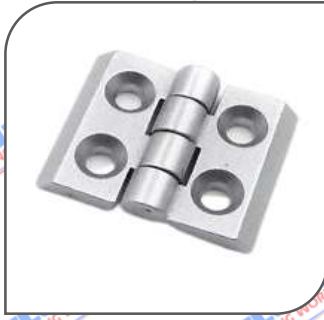
NYLON HINGES **5050 Series**



| DESCRIPTION | PART NO | SIZE | COLOUR |
|--------------|------------|------|--------|
| NYLON HINGES | WE-NH-5050 | 5050 | BLACK |

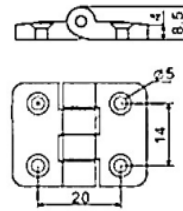
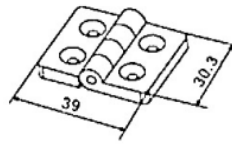


METAL HINGES



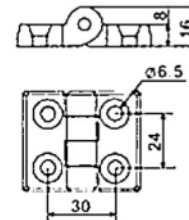
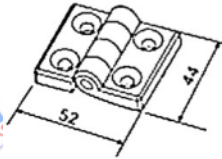
| MATERIAL | COLOUR | APPLICATION |
|--------------|----------------|--|
| ZINC / METAL | SILVER / BLACK | Metal Hinges used to mount doors ,frames etc.. |

METAL HINGES 2020 Series



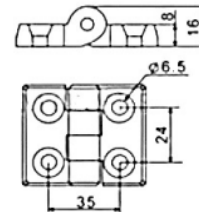
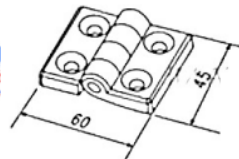
| DESCRIPTION | PART NO | SIZE | COLOUR |
|--------------|------------|------|----------------|
| METAL HINGES | WE-MH-2020 | 2020 | SILVER / BLACK |

METAL HINGES 3030 Series



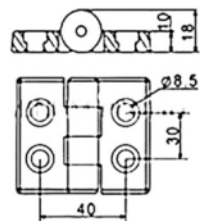
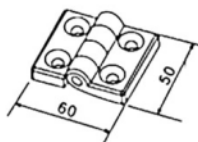
| DESCRIPTION | PART NO | SIZE | COLOUR |
|--------------|------------|------|----------------|
| METAL HINGES | WE-MH-3030 | 3030 | SILVER / BLACK |

METAL HINGES 3040 Series



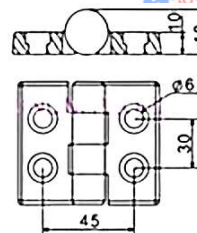
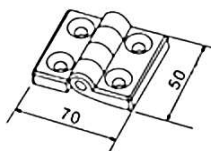
| DESCRIPTION | PART NO | SIZE | COLOUR |
|--------------|------------|------|----------------|
| METAL HINGES | WE-MH-3040 | 3040 | SILVER / BLACK |

METAL HINGES **4040Series**



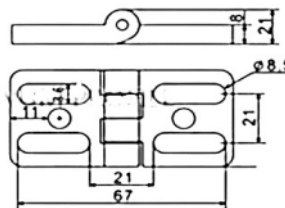
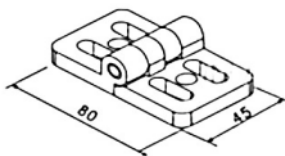
| DESCRIPTION | PART NO | SIZE | COLOUR |
|--------------|------------|------|----------------|
| METAL HINGES | WE-MH-4040 | 4040 | SILVER / BLACK |

METAL HINGES **4545Series**



| DESCRIPTION | PART NO | SIZE | COLOUR |
|--------------|------------|------|----------------|
| METAL HINGES | WE-MH-4545 | 4545 | SILVER / BLACK |

METAL HINGES **4545Series**



| DESCRIPTION | PART NO | SIZE | COLOUR |
|--------------|------------|------|----------------|
| METAL HINGES | WE-MH-4545 | 4545 | SILVER / BLACK |



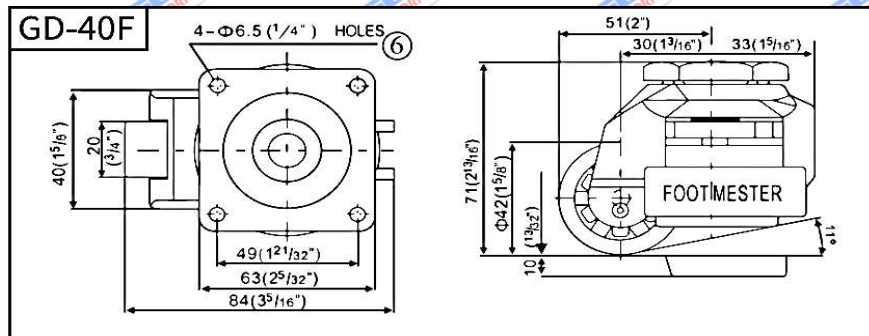


FOOTLEVEL MASTER

| MATERIAL | FINISH | APPLICATION |
|----------------------|--------|--|
| CASTING BODY / NYLON | COATED | Foot Master levelling castor mainly used in Machine base structure ,easily movable , Inbuild leveller which can lift the structure from floor according to its weight. |

FOOTLEVEL MASTER

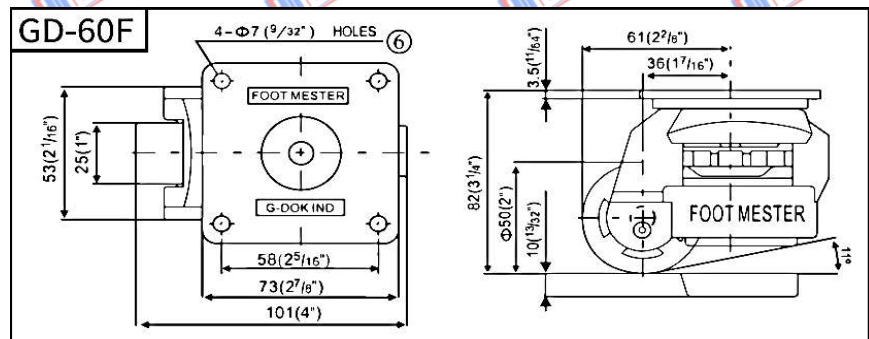
GD 40F



| PART NO | LOADING CAPACITY | WHEEL DIA | MASS / KG |
|----------|------------------|-----------|-----------|
| WE-GD40F | 150KG / 4PC | 42 | 0.35 |

FOOTLEVEL MASTER

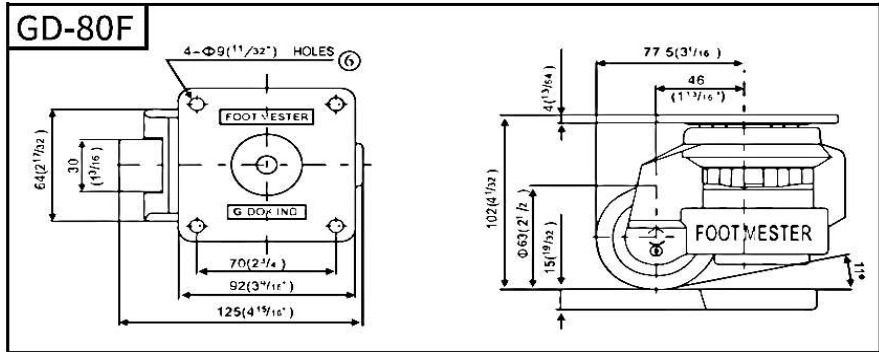
GD 60F



| PART NO | LOADING CAPACITY | WHEEL DIA | MASS / KG |
|----------|------------------|-----------|-----------|
| WE-GD60F | 500KG / 4PC | 50 | 0.7 |

FOOTLEVEL MASTER

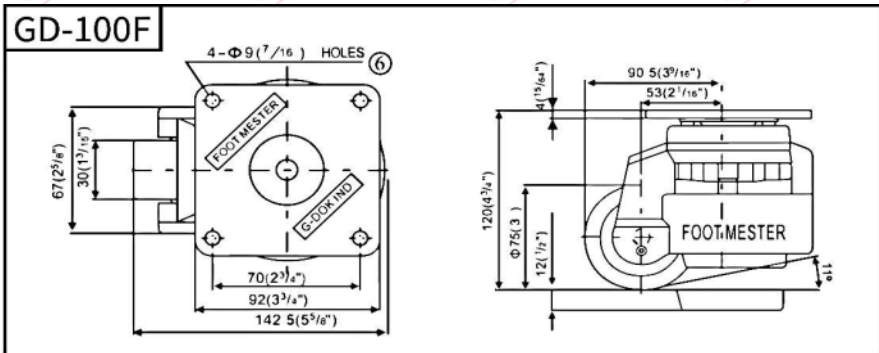
GD 80F



| PART NO | LOADING CAPACITY | WHEEL DIA | MASS / KG |
|----------|------------------|-----------|-----------|
| WE-GD80F | 1000KG / 4PC | 63 | 1.3 |

FOOTLEVEL MASTER

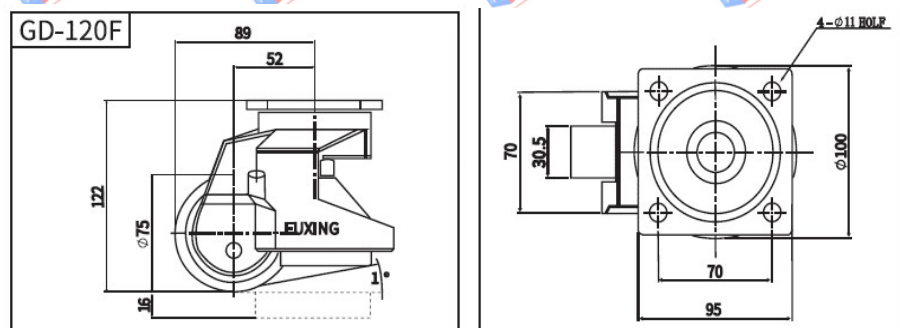
GD 100F



| PART NO | LOADING CAPACITY | WHEEL DIA | MASS / KG |
|-----------|------------------|-----------|-----------|
| WE-GD100F | 1500KG / 4PC | 75 | 1.75 |

FOOTLEVEL MASTER

GD 120F



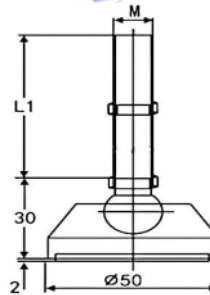
| PART NO | LOADING CAPACITY | WHEEL DIA | MASS / KG |
|-----------|------------------|-----------|-----------|
| WE-GD120F | 2000KG / 4PC | 75 | 1.95 |

ADJUSTABLE FOOT



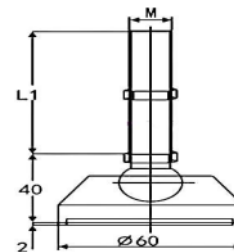
| MATERIAL | FINISH | APPLICATION |
|---------------|--------------------------------------|---|
| NYLON / STEEL | NICKEL PLATED(NP) ZINC PLATED(ZP) | Adjustable Foot used to mount on Tables , Machine base , Frames to adjust with multiple heights according to its thread length. |

ADJUSTABLE FOOT BASE DIA 50mm



| PART NO | SIZE | M | L1 |
|----------------|------|----|-----|
| WE-AF-50-850 | M8 | 8 | 50 |
| WE-AF-50-1050 | M10 | 10 | 50 |
| WE-AF-50-1080 | M10 | 10 | 80 |
| WE-AF-50-10100 | M10 | 10 | 100 |
| WE-AF-50-1250 | M12 | 12 | 50 |

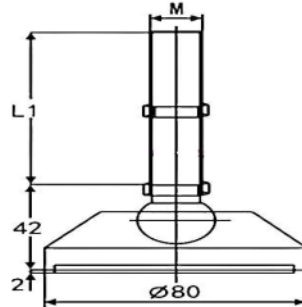
ADJUSTABLE FOOT BASE DIA 60mm



| PART NO | SIZE | M | L1 |
|----------------|------|----|-----|
| WE-AF-60-1050 | M10 | 10 | 50 |
| WE-AF-60-1250 | M12 | 12 | 50 |
| WE-AF-60-1280 | M12 | 12 | 80 |
| WE-AF-60-12100 | M12 | 12 | 100 |

ADJUSTABLE FOOT

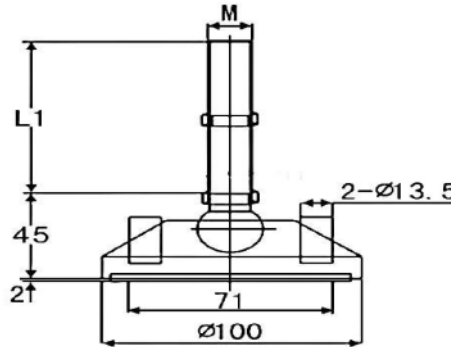
BASE DIA 80mm



| PART NO | SIZE | M | L1 |
|----------------|------|----|-----|
| WE-AF-80-1250 | M12 | 12 | 50 |
| WE-AF-80-12100 | M12 | 12 | 100 |
| WE-AF-80-14100 | M14 | 14 | 100 |
| WE-AF-80-16100 | M16 | 16 | 100 |
| WE-AF-80-16150 | M16 | 16 | 100 |

ADJUSTABLE FOOT

BASE DIA 100mm



| PART NO | SIZE | M | L1 |
|-----------------|------|----|-----|
| WE-AF-100-16100 | M16 | 16 | 100 |
| WE-AF-100-20100 | M20 | 20 | 100 |



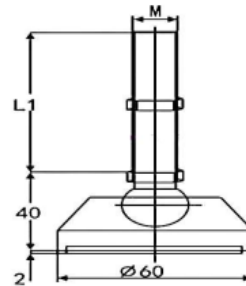
ADJUSTABLE STEEL FOOT



| MATERIAL | FINISH | APPLICATION |
|----------|--------------------------------------|---|
| STEEL | NICKEL PLATED(NP) ZINC PLATED(ZP) | Adjustable Steel Foot used to mount on Tables , Machine base , Frames to adjust with multiple heights according to its thread length. |

ADJUSTABLE FOOT

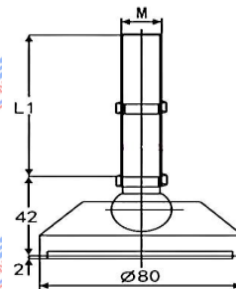
BASE DIA 60mm



| PART NO | SIZE | M | L1 |
|-----------------|------|----|-----|
| WE-ASF-60-1250 | M12 | 12 | 50 |
| WE-ASF-60-12100 | M12 | 12 | 100 |

ADJUSTABLE FOOT

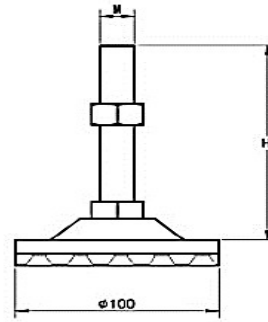
BASE DIA 80mm



| PART NO | SIZE | M | L1 |
|-----------------|------|----|-----|
| WE-ASF-80-12100 | M12 | 12 | 100 |
| WE-ASF-80-12150 | M12 | 12 | 150 |
| WE-AF-80-14150 | M14 | 14 | 150 |
| WE-AF-80-16100 | M16 | 16 | 100 |

ADJUSTABLE FOOT

BASE DIA 100mm



| PART NO | SIZE | M | H |
|------------------|------|----|-----|
| WE-ASF-100-16100 | M16 | 16 | 100 |
| WE-ASF-100-20150 | M20 | 20 | 150 |

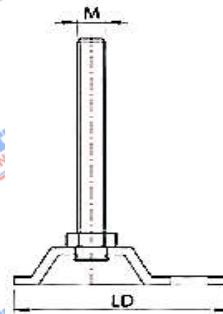


LEVELLER WITH GROUTING

| MATERIAL | FINISH | APPLICATION |
|----------|--------------------------------------|---|
| STEEL | NICKEL PLATED(NP) ZINC PLATED(ZP) | Adjustable Steel Foot used to mount on Tables , Machine base , Frames to adjust with multiple heights according to its thread length. |

LEVELLER WITH GROUTING

BASE DIA 80mm



| PART NO | SIZE | M | LD |
|-----------------|------|----|-----|
| WE-LG-100-12100 | M12 | 12 | 100 |

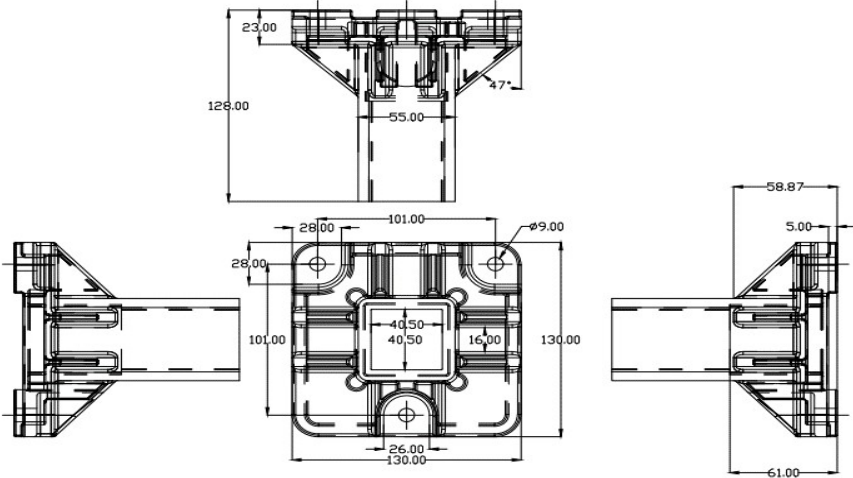
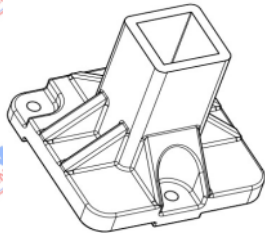
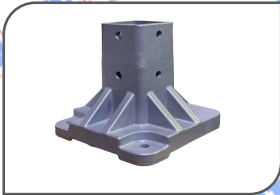
FOUNDATION BRACKET



| MATERIAL | FINISH | APPLICATION |
|----------|--------|---|
| ALLOY | COATED | Foundation Bracket Used for Fencing Area , Conveyor legs ,Single pillar mount by fixing permanently with anchoring bolts. |

FOUNDATION BRACKET

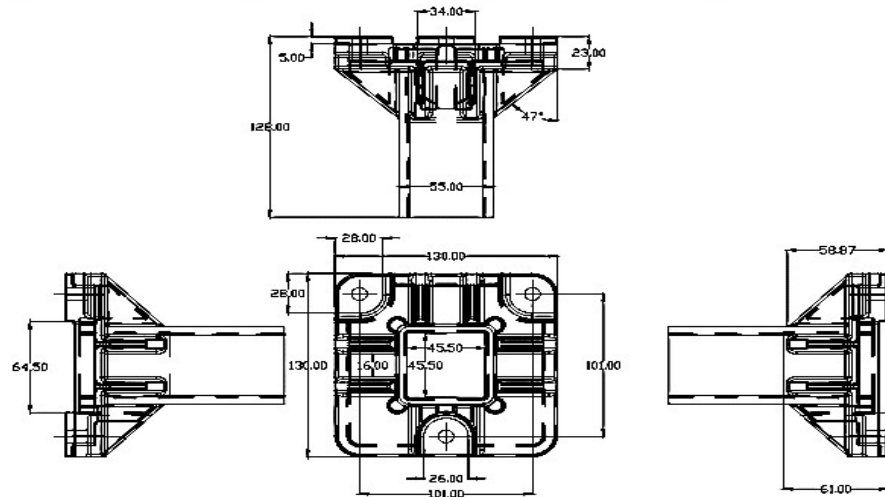
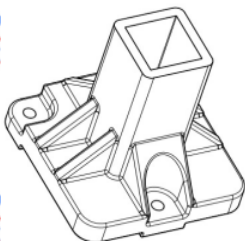
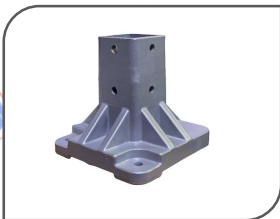
40 SERIES



| PART NO | SIZE | FINISH | MOUNTING TYPE |
|----------|------|--------|--------------------|
| WE-FM-40 | 40 | COATED | ANCHORING BOLT 8MM |

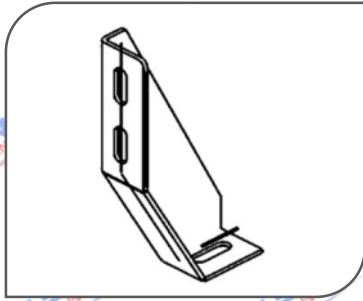
FOUNDATION BRACKET

45 SERIES



| PART NO | SIZE | FINISH | MOUNTING TYPE |
|----------|------|--------|---------------------|
| WE-FM-45 | 45 | COATED | ANCHORING BOLT 10MM |

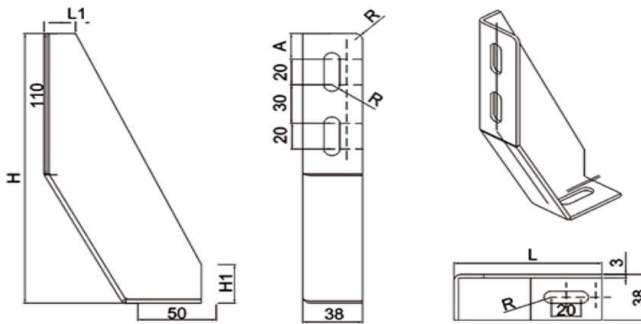
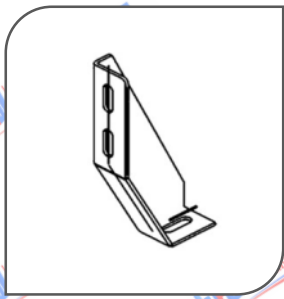
FOUNDATION METAL MOUNT



| MATERIAL | FINISH | APPLICATION |
|-----------|--------|--|
| MILDSTEEL | COATED | Foundation Metal mount Used for Fencing Area , Conveyor legs ,Single pillar mount by fixing permanently with anchoring bolts. |

FOUNDATION METAL MOUNT

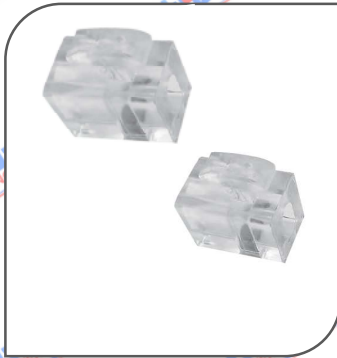
METAL



| PART NO | L | L1 | H | HL | A | R |
|----------|-----|----|-----|----|----|---|
| WE-FMM-S | 80 | 15 | 170 | 25 | 19 | 4 |
| WE-FMM-L | 100 | 20 | 210 | 30 | 19 | 5 |

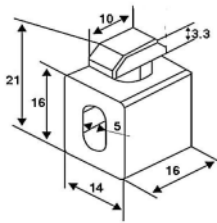


CLAMPING BLOCK



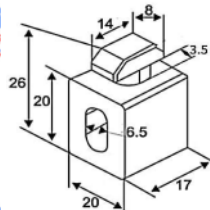
| MATERIAL | COLOUR | APPLICATION |
|--------------|-------------|--|
| POLYURETHENE | TRANSPARENT | Clamping block used to Mount acrylic , Name board ,etc in assembled frame or in any kind structures. |

CLAMPING BLOCK 2020 Series



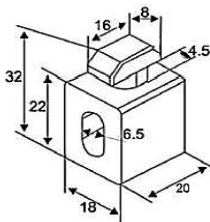
| DESCRIPTION | PART NO | SIZE | COLOUR |
|----------------|----------|------|-------------|
| CLAMPING BLOCK | WE-CB-20 | 2020 | TRANSPARENT |

CLAMPING BLOCK 3030 Series



| DESCRIPTION | PART NO | SIZE | COLOUR |
|----------------|----------|------|-------------|
| CLAMPING BLOCK | WE-CB-30 | 3030 | TRANSPARENT |

CLAMPING BLOCK 4040 Series



| DESCRIPTION | PART NO | SIZE | COLOUR |
|----------------|------------|---------|-------------|
| CLAMPING BLOCK | WE-CB-40S8 | 4040 S8 | TRANSPARENT |

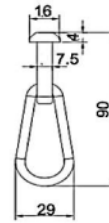
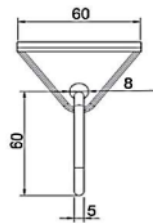
SLIDING TOOL HANGER



| MATERIAL | COLOUR | APPLICATION |
|---------------|----------------|---|
| NYLON / METAL | BLACK / SILVER | Sliding tool hanger used to hang spring balancer ,electric screw drivers by sliding in to the Tslot profiles. |

SLIDING TOOL HANGER

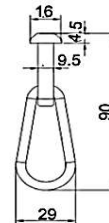
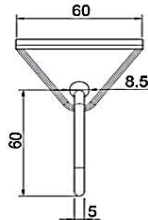
30 SERIES



| DESCRIPTION | PART NO | SIZE | COLOUR |
|---------------------|-----------|------|----------------|
| SLIDING TOOL HANGER | WE-STH-30 | 30 | BLACK / SILVER |

SLIDING TOOL HANGER

40 / 45 / 60 / 80 / 90 SERIES



| DESCRIPTION | PART NO | SIZE | COLOUR |
|---------------------|-------------|----------------|----------------|
| SLIDING TOOL HANGER | WE-STH-4045 | 40/45/60/80/90 | BLACK / SILVER |



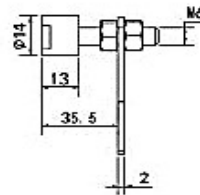
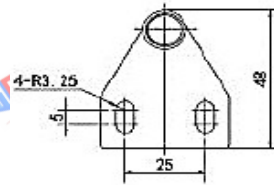
MAGNETIC LATCHES



| MATERIAL | FINISH / COLOUR | APPLICATION |
|---------------|-----------------------|---|
| METAL / NYLON | NICKEL PLATED / BLACK | Magnetic latch used to catch with magnetic friction with doors ,frames in Tslot profile structure |

MAGNETIC PLATE LATCH

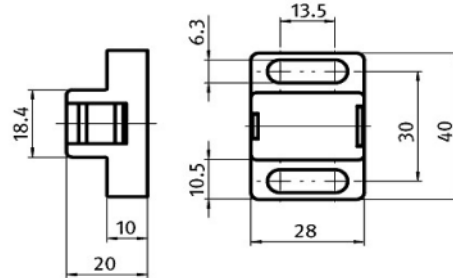
SLOT 8 / 10



| DESCRIPTION | PART NO | SIZE | FINSIH |
|----------------------|------------|-------------|---------------|
| MAGNETIC PLATE LATCH | WE-MPL-810 | SLOT 8 / 10 | NICKEL PLATED |

MAGNETIC BLOCK LATCH

SLOT 8 / 10



| DESCRIPTION | PART NO | SIZE | COLOUR |
|----------------------|------------|-------------|--------|
| MAGNETIC BLOCK LATCH | WE-MBL-820 | SLOT 8 / 10 | BLACK |

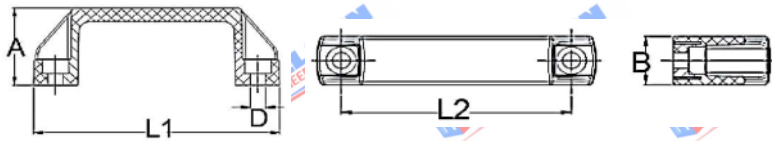


HANDLES



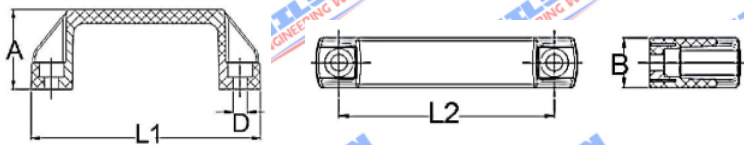
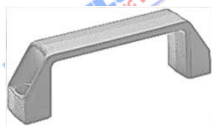
| MATERIAL | COLOUR | APPLICATION |
|----------|----------------|--|
| NYLON | BLACK / SILVER | Handles used in doors ,windows ,frame for easy handling. |

HANDLES NYLON



| DESCRIPTION | PART NO | L1 | L2 | A | B / D |
|---------------|-----------|-----|-----|----|----------|
| HANDLES-NYLON | WE-HA-90 | 109 | 90 | 37 | 20 / 6.5 |
| HANDLES-NYLON | WE-HA-120 | 138 | 120 | 41 | 25 / 8.5 |
| HANDLES-NYLON | WE-HA-150 | 170 | 150 | 44 | 28 / 8.5 |
| HANDLES-NYLON | WE-HA-160 | 185 | 160 | 49 | 28 / 8.5 |
| HANDLES-NYLON | WE-HA-180 | 200 | 180 | 52 | 28 / 8.5 |

HANDLES METAL

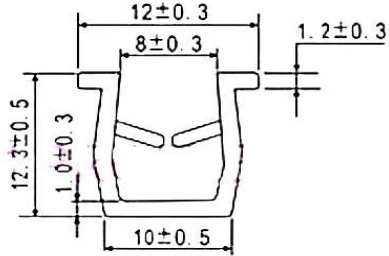


| DESCRIPTION | PART NO | L1 | L2 | A | B / D |
|---------------|------------|-----|-----|----|----------|
| HANDLES-METAL | WE-AHA-90 | 109 | 90 | 37 | 20 / 6.5 |
| HANDLES-METAL | WE-AHA-120 | 138 | 120 | 41 | 25 / 8.5 |



COVER REDUCER

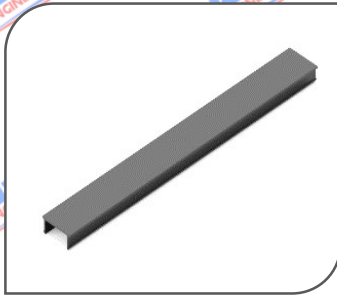
SLOT 10



| DESCRIPTION | PART NO | SIZE | COLOUR |
|---------------|-----------|---------|--------|
| COVER REDUCER | WE-CR-S10 | SLOT 10 | BLACK |



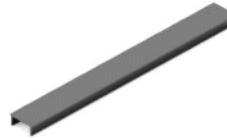
COVER PROFILE



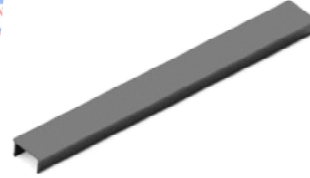
| MATERIAL | COLOUR | APPLICATION |
|----------|--|---|
| PVC | BLACK(BK), YELLOW(YL) , BLUE(BL) , RED(RD) , WHITE(WH) , GREY(GY) | Cover Profile used to cover the slot in T-slot profiles. |

COVER PROFILE

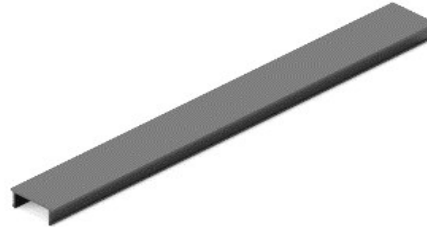
SLOT 6 - 20 SERIES



| DESCRIPTION | PART NO | SIZE | COLOUR |
|---------------|---------|--------|-------------------|
| COVER PROFILE | WE-CP-6 | SLOT 6 | BK,YL,BL,RD,WH,GY |

COVER PROFILE**SLOT 8 - 30 / 40 / 60 SERIES**

| DESCRIPTION | PART NO | SIZE | COLOUR |
|---------------|---------|--------|-------------------|
| COVER PROFILE | WE-CP-8 | SLOT 8 | BK,YL,BL,RD,WH,GY |

COVER PROFILE**SLOT 10 - 40 / 45 / 60 / 80 / 90 SERIES**

| DESCRIPTION | PART NO | SIZE | COLOUR |
|---------------|----------|---------|-------------------|
| COVER PROFILE | WE-CP-10 | SLOT 10 | BK,YL,BL,RD,WH,GY |





END CAP

| MATERIAL | COLOUR | APPLICATION |
|----------|--|---|
| NYLON | BLACK(BK) WHITE(WH) GREY(GY) YELLOW(YL) | End cap used to Cover end of T-slot profiles. |

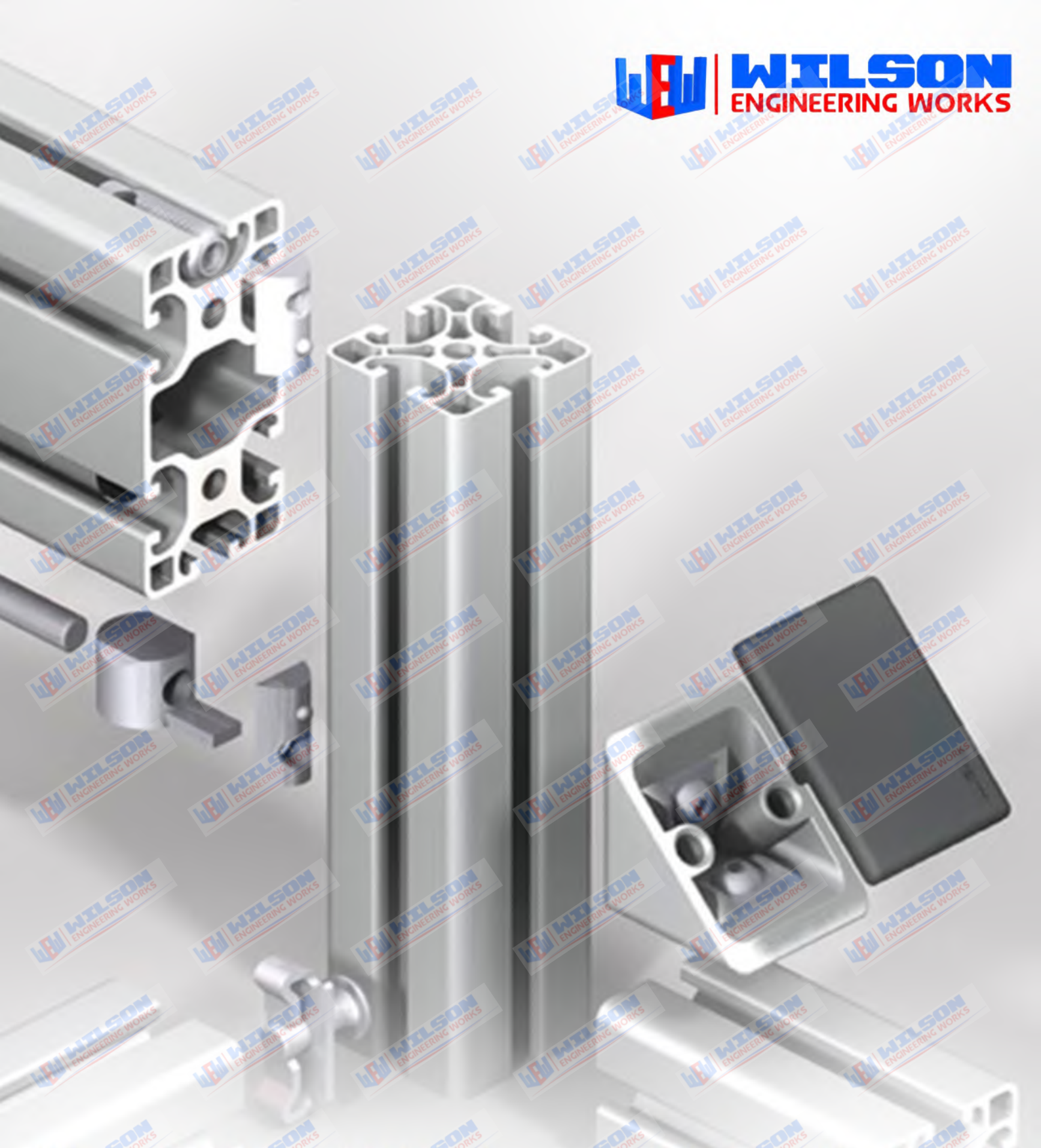
| DESCRIPTION | PART NO | SIZE | COLOUR |
|-------------|---------------|-------------|-------------|
| END CAP | WE-EC-2020 | 2020 | BK/WH/GY/YL |
| END CAP | WE-EC-2040 | 2040 | BK/WH/GY/YL |
| END CAP | WE-EC-3030 | 3030 | BK/WH/GY/YL |
| END CAP | WE-EC-3060 | 3060 | BK/WH/GY/YL |
| END CAP | WE-EC-3030R | 3030 RADIUS | BK/WH/GY/YL |
| END CAP | WE-EC-4040 | 4040 | BK/WH/GY/YL |
| END CAP | WE-EC-4040 S8 | 4040 S8 | BK/WH/GY/YL |
| END CAP | WE-EC-4040R | 4040 RADIUS | BK/WH/GY/YL |
| END CAP | WE-EC-4080 | 4080 | BK/WH/GY/YL |
| END CAP | WE-EC-4545 | 4545 | BK/WH/GY/YL |
| END CAP | WE-EC-4545R | 4545 RADIUS | BK/WH/GY/YL |
| END CAP | WE-EC-4590 | 4590 | BK/WH/GY/YL |
| END CAP | WE-EC-6060 | 6060 | BK/WH/GY/YL |
| END CAP | WE-EC-8080 | 8080 | BK/WH/GY/YL |
| END CAP | WE-EC-9090 | 9090 | BK/WH/GY/YL |
| END CAP | WE-EC-1530 | 1530 | BK/WH/GY/YL |



ALUMINIUM PROFILE SYSTEM



ALUMINIUM PROFILE WORKSTATION ALUMINIUM PROFILE MACHINE ENCLOSURE
 CONVEYOR ESD ASSEMBLY STATION ALUMINIUM PROFILE ROLLER CONVEYOR
 ESD CONVEYOR TROLLEYS PALLET MACHINE GUARD FENCING.



UNIT I: REGD.OFFICE & FACTORY
NO-21 MOGAPPAIR ROAD,
MANNURPET, PADI,
CHENNAI-600050

☎ 044 - 4958 4725

☎ 97104 69619 | 94440 46521 | 90031 37002

wilsonengineeringwork@gmail.com | lee@wilsonengg.in

UNIT II: GODOWN & FACTORY
NO-71 MOGAPPAIR ROAD,
MANNURPET, PADI,
CHENNAI-600050

FOLLOW US ON:   